



SparkHomes.com.au

INSULATED PRE-FAB CONTAINER TYPE



SPARK HOMES
PRE-FAB CONTAINER
CREATING NEW
TRENDS IN
AUSTRALIA WITH
QUICK BUILD
TECHNOLOGY

Transportable & Flat Pack Model

35.40 SQM

Lounge, Bedroom, Kitchen, Bathroom

Flexible stack up design with multiple units



Watch You tube link for
Quick build Solution on
[PRE-FAB CONTAINER HOMES](#)

****Distributorship
enquires are welcome**

Opt 1: Flat Pack (Silver)

Opt 2: Transportable (Gold)

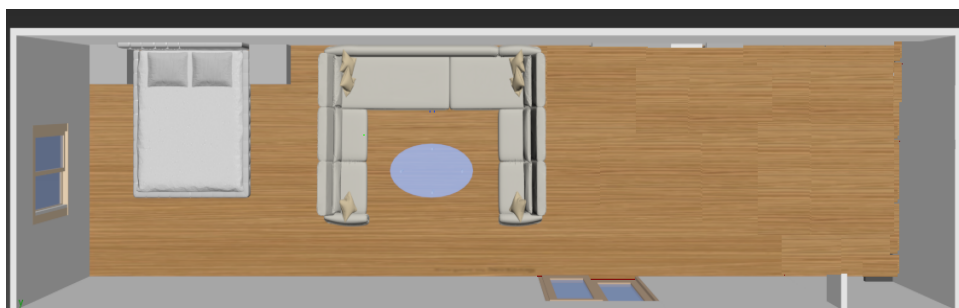
- ✓ Pre-Fab insulated Container type
- ✓ Size - 3.0x 11.8 *2.7m : 35.40 SQM
- ✓ Bigger than a 40 Ft.
- ✓ Fully functional home
- ✓ Ready for Site Delivery

Our Quality Homes Are
FULLY INSULATED,
Engineered & Built to stringent Australian
Building Codes

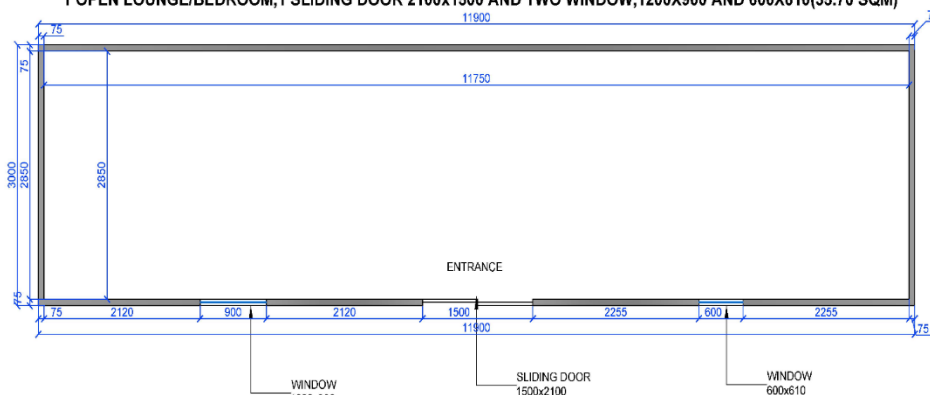
Opt 1 - \$ 32,000

Opt 2 - \$ 39,000

GST Additional
*Disclaimer: Price is
subject to change without
notice*



1 OPEN LOUNGE/BEDROOM, 1 SLIDING DOOR 2100x1500 AND TWO WINDOW, 1200X900 AND 600X610 (35.70 SQM)



Add-ons at addition cost

- Double Glazed doors & windows.
- Glass walls & room partitions walls
- Washroom fittings & Plumbing works
- Flooring tiles, Carpet, Air-con
- Off grid – Solar panel, Solar water heater
- Architecturally designed External cladding
- Kitchen Cabinet, Wardrobe, Appliances
- Design by Architect
- Range of design material to select
- Customized – More than Container size
- Decking with pergola / Awing
- Range of selection options – visit our website
- Fiancé Option - Available

Standard Inclusions

Floor Plan : 1 x Bedroom, Open lounge, Bathroom

Pre-Fab Container : Fully insulated & pre-painted mist white interior with all fitting accessories.

Walls & Roof : EPS Insulated Panels

Wall partition: 2 x Insulated pre-painted EPS panel

Floor : Steel joist with timber floor or vinyl covering

Doors : 1 x Entrance door & 2 x internal door with lock

Windows : 4 x Aluminium powder coated windows with locks and fly screen

Electrical : 5 x LED Lights & 3 x Electrical Points
(option – 2 only)

KING – OR, 1BT One open room with Bathroom Transportable & Flat Pack

Opt 1: Flat Pack (Silver)

Opt 2: Transportable (Gold)

- ✓ Pre-Fab insulated Container type
- ✓ Size - 3.0x 11.8 *2.7m : 35.40 SQM
- ✓ Bigger than a 40 Ft.
- ✓ Fully functional home
- ✓ Ready for Site Delivery

Our Quality Homes Are
FULLY INSULATED,
Engineered & Built to stringent Australian
Building Codes

Opt 1 - \$ 35,500

Opt 2 - \$ 42,000

GST Additional
Disclaimer: Price is
subject to change without
notice



Add-ons at addition Cost

- Double Glazed doors & windows.
- Glass walls & room partitions walls
- Washroom fittings & Plumbing works
- Flooring tiles, Carpet, Air-con
- Off grid – Solar panel, Solar water heater
- Architecturally designed External cladding
- Kitchen Cabinet, Wardrobe, Appliances
- Design by Architect
- Range of design material to select
- Customized – More than Container size
- Decking with pergola / Awing
- Range of selection options – visit our website
- Fiancé Option - Available

Standard Inclusions

Floor Plan : 1 x Bedroom, Open lounge, Bathroom

Pre-Fab Container : Fully insulated & pre-painted mist white interior with all fitting accessories.

Walls & Roof : EPS Insulated Panels

Wall partition: 2 x Insulated pre-painted EPS panel

Floor : Steel joist with timber floor or vinyl covering

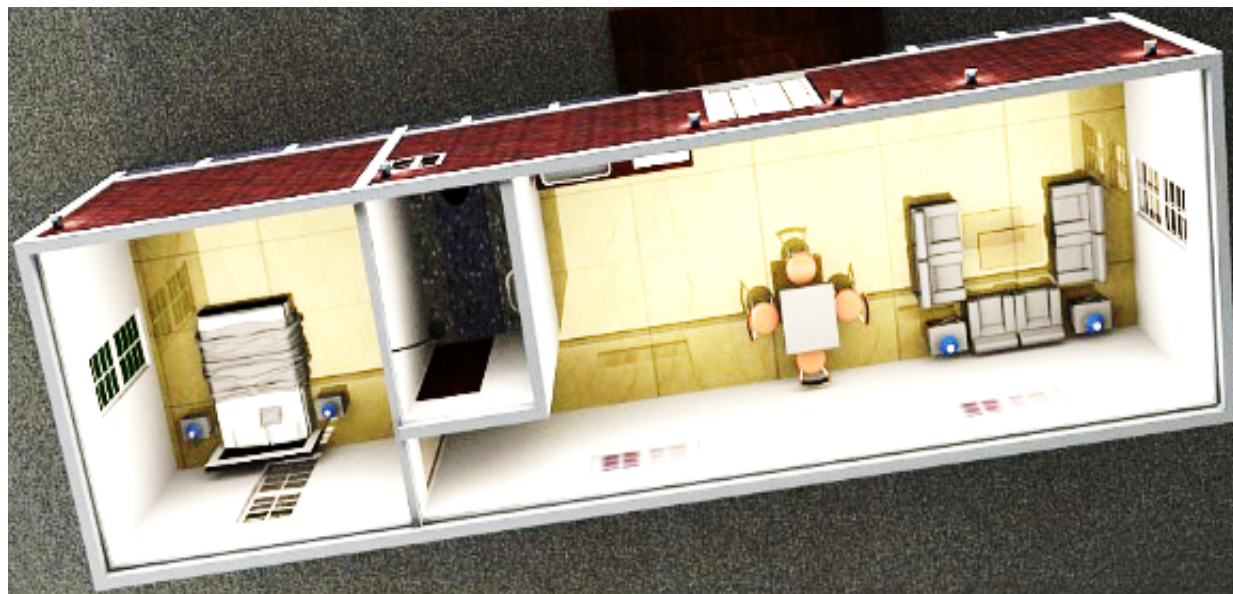
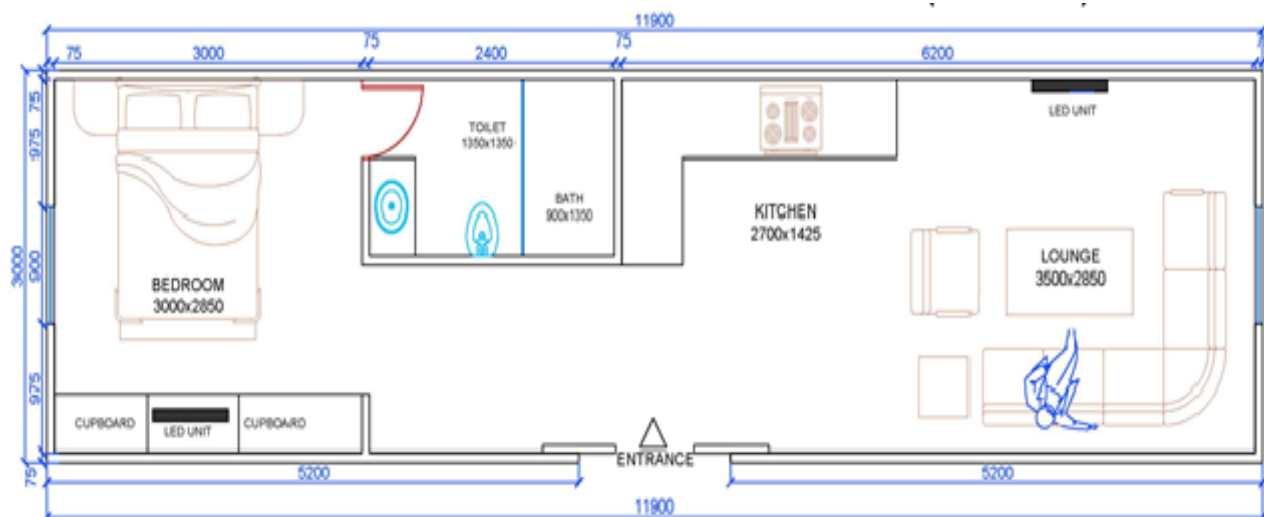
Doors : 1 x Entrance door & 2 x internal door with lock

Windows : 4 x Aluminium powder coated windows with locks and fly screen

Electrical : 5 x LED Lights & 3 x Electrical Points
(option – 2 only)

KING – OR, 1BT One open room with Bathroom Transportable & Flat Pack

Sample Floorplans





SparkHomes.com.au

KING -1B, L, BT,K

1 BEDROOM +

LOUNGE+KITCHEN+BATHROOM

Transportable & Flat Pack

Opt 1: Flat Pack (Silver)

Opt 2: Transportable (Gold)

- ✓ Pre-Fab insulated Container type
- ✓ Size - 3.0x 11.8 *2.7m : 35.40 SqM
- ✓ Bigger than a 40 Ft.
- ✓ Fully functional home
- ✓ Ready for Site Delivery

Our Quality Homes Are
FULLY INSULATED,
Engineered & Built to stringent Australian
Building Codes

Opt 1 - \$38,000

Opt 2 - \$45,000

*GST Additional
Disclaimer: Price is
subject to change
without notice*



Add-ons at addition Cost

- Double Glazed doors & windows.
- Glass walls & room partitions walls
- Washroom fittings & Plumbing works
- Flooring tiles, Carpet, Air-con
- Off grid – Solar panel, Solar water heater
- Architecturally designed External cladding
- Kitchen Cabinet, Wardrobe, Appliances
- Design by Architect
- Range of design material to select
- Customized – More than Container size
- Decking with pergola / Awing
- Range of selection options – visit our website
- Fiancé Option - Available

Standard Inclusions

Floor Plan : 1 x Bedroom/Open lounge/Bathroom

Pre-Fab Container : Fully insulated & pre-painted mist white interior with all fitting accessories.

Walls & Roof : EPS Insulated Panels

Floor : Steel joist with timber floor or vinyl covering

Doors : 1 x Entrance door with lock

Windows : 6 x Aluminium powder coated windows with locks and fly screen

Electrical : 3 x LED Lights & 3 x Electrical Points

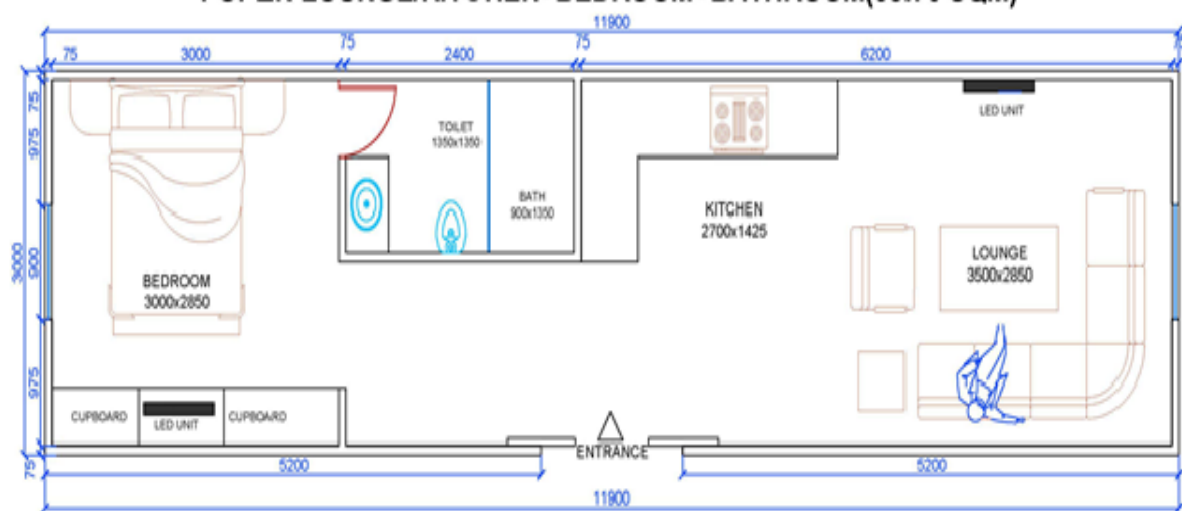
Bedroom : 1 Bedroom

KING -1B, L, BT,K
1 BEDROOM +
LOUNGE+KITCHEN+BATHROO
M

Transportable & Flat Pack

Sample Floorplans

1 OPEN LOUNGE/KITCHEN+BEDROOM+BATHROOM(35.70 SQM)



OPTION 1(35.70SQM.)

KING -2B, L, BT,K

2 BEDROOM +

LOUNGE+KITCHEN+1BATHROOM

Transportable & Flat Pack

Opt 1: Flat Pack (Silver)

Opt 2: Transportable (Gold)

- ✓ Pre-Fab insulated Container type
- ✓ Size - 3.0x 11.8 *2.7m : 35.40 SqM
- ✓ Bigger than a 40 Ft.
- ✓ Fully functional home
- ✓ Ready for Site Delivery

**Our Quality Homes Are
FULLY INSULATED,
Engineered & Built to stringent Australian
Building Codes**

Opt 1 - \$39,500

Opt 2 - \$48,500

*GST Additional
Disclaimer: Price is
subject to change
without notice*



Add-ons at addition Cost

- Double Glazed doors & windows.
- Glass walls & room partitions walls
- Washroom fittings & Plumbing works
- Flooring tiles, Carpet, Air-con
- Off grid – Solar panel, Solar water heater
- Architecturally designed External cladding
- Kitchen Cabinet, Wardrobe, Appliances
- Design by Architect
- Range of design material to select
- Customized – More than Container size
- Decking with pergola / Awing
- Range of selection options – visit our website
- Fiancé Option - Available

Standard Inclusions

Floor Plan : 2x Bedroom/Open lounge/Bathroom

Pre-Fab Container : Fully insulated & pre-painted mist white interior with all fitting accessories.

Walls & Roof : EPS Insulated Panels

Floor : Steel joist with timber floor or vinyl covering

Doors : 1 x Entrance door with lock

Windows : 4 x Aluminium powder coated windows with locks and fly screen

Electrical : 4 x LED Lights & 5 x Electrical Points

Bedroom : 2 Bedroom



SparkHomes.com.au

KING -2B, L, 2BT,K
2 BEDROOM +
LOUNGE+KITCHEN+2BATHROOM
Transportable & Flat Pack

Opt 1: Flat Pack (Silver)

Opt 2: Transportable (Gold)

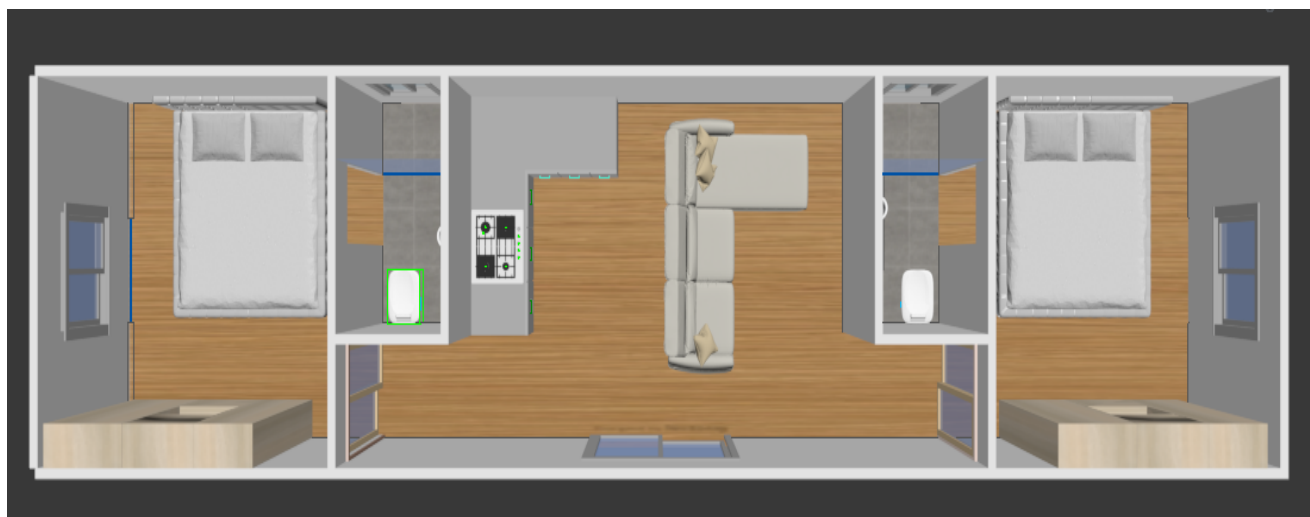
- ✓ **Pre-Fab insulated Container type**
- ✓ **Size - 3.0x 11.8 *2.7m : 35.40 SQM**
- ✓ **Bigger than a 40 Ft.**
- ✓ **Fully functional home**
- ✓ **Ready for Site Delivery**

Our Quality Homes Are
FULLY INSULATED,
Engineered & Built to stringent Australian
Building Codes

Opt 1 - \$40,000

Opt 2 - \$41,000

GST Additional
Disclaimer: Price is
subject to change
without notice



Add-ons at addition Cost

- Double Glazed doors & windows.
- Glass walls & room partitions walls
- Washroom fittings & Plumbing works
- Flooring tiles, Carpet, Air-con
- Off grid – Solar panel, Solar water heater
- Architecturally designed External cladding
- Kitchen Cabinet, Wardrobe, Appliances
- Design by Architect
- Range of design material to select
- Customized – More than Container size
- Decking with pergola / Awing
- Range of selection options – visit our website
- **Fiancé Option - Available**

Standard Inclusions

Floor Plan : 2x Bedroom/Open lounge/2 Bathroom

Pre-Fab Container : Fully insulated & pre-painted mist white interior with all fitting accessories.

Walls & Roof : EPS Insulated Panels

Floor : Steel joist with timber floor or vinyl covering

Doors : 1 x Entrance door with lock

Windows : 4 x Aluminium powder coated windows with locks and fly screen

Electrical : 6 x LED Lights & 6 x Electrical Points

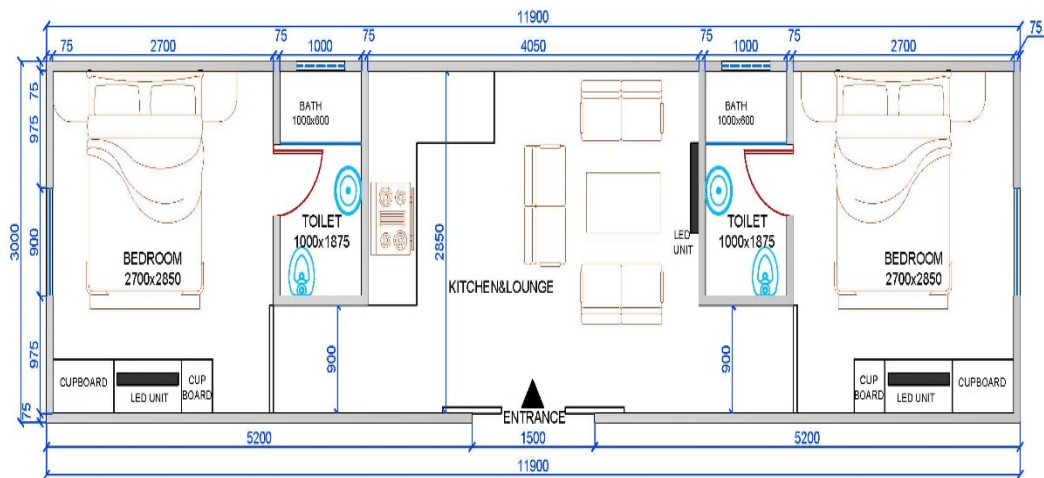
Bedroom : 2 Bedroom

Bathroom : 2 Bathroom

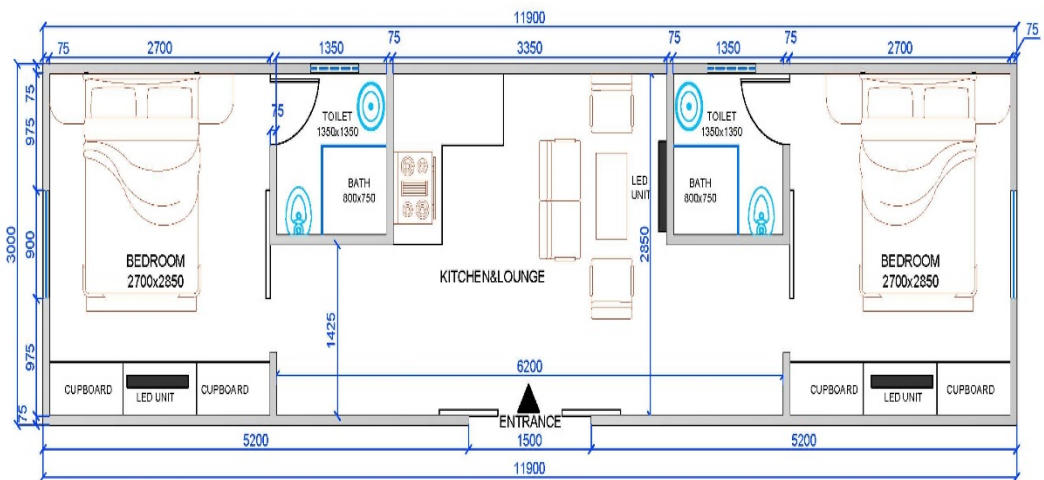
KING -2B, L, 2BT,K **2 BEDROOM +** **LOUNGE+KITCHEN+2BATHROOM** **Transportable & Flat Pack**

Sample Floorplans

1 OPEN LOUNGE/KITCHEN+2 (BEDROOM)+BATHROOM(35.70 SQM)



OPTION 1(35.70SQM.)



OPTION 2(35.70SQM.)



SparkHomes.com.au

KING – 3B,BT,K
3 BEDROOM, BATHROOM
Transportable & Flat Pack

Opt 1: Flat Pack (Silver)

Opt 2: Transportable (Gold)

- ✓ **Pre-Fab insulated Container type**
- ✓ **Size - 3.0x 11.8 *2.7m : 35.40 SQM**
- ✓ **Bigger than a 40 Ft.**
- ✓ **Fully functional home**
- ✓ **Ready for Site Delivery**

Our Quality Homes Are
FULLY INSULATED,
Engineered & Built to stringent Australian
Building Codes

Opt 1 - \$41,500

Opt 2 - \$51,500

GST Additional
Disclaimer: Price is
subject to change
without notice



Add-ons at addition Cost

- Double Glazed doors & windows.
- Glass walls & room partitions walls
- Washroom fittings & Plumbing works
- Flooring tiles, Carpet, Air-con
- Off grid – Solar panel, Solar water heater
- Architecturally designed External cladding
- Kitchen Cabinet, Wardrobe, Appliances
- Design by Architect
- Range of design material to select
- Customized – More than Container size
- Decking with pergola / Awing
- Range of selection options – visit our website
- **Fiancé Option - Available**

Standard Inclusions

Floor Plan : 3x Bedroom/, 1 Bathroom, 1 vanity

Pre-Fab Container : Fully insulated & pre-painted mist white interior with all fitting accessories.

Walls & Roof : EPS Insulated Panels

Floor : Steel joist with timber floor or vinyl covering

Doors : 1 x Entrance door with lock

Windows : 4 x Aluminium powder coated windows with locks and fly screen

Electrical : 5 x LED Lights & 5 x Electrical Points

Bedroom : 3 Bedroom

Bathroom : 1 Bathroom



SparkHomes.com.au

2 KING – 4B, L, 2BT, K
LOUNGE, 4 BEDROOM
+KITCHEN+2BATHROOM, STAIRCASE
Transportable & Flat Pack

Opt 1: Flat Pack (Silver)

Opt 2: Transportable (Gold)

- ✓ **Pre-Fab insulated Container type**
- ✓ **Size - 3.0x 11.8 *2.7m : 35.40 SQM**
- ✓ **Bigger than a 40 Ft.**
- ✓ **Fully functional home**
- ✓ **Ready for Site Delivery**

Our Quality Homes Are
FULLY INSULATED,
Engineered & Built to stringent Australian
Building Codes

Opt 1 - \$79,000

Opt 2 - \$95,500

GST Additional
Disclaimer: Price is
subject to change
without notice



Add-ons at addition Cost

- Double Glazed doors & windows.
- Glass walls & room partitions walls
- Washroom fittings & Plumbing works
- Flooring tiles, Carpet, Air-con
- Off grid – Solar panel, Solar water heater
- Architecturally designed External cladding
- Kitchen Cabinet, Wardrobe, Appliances
- Design by Architect
- Range of design material to select
- Customized – More than Container size
- Decking with pergola / Awing
- Range of selection options – visit our website
- **Fiancé Option - Available**

Standard Inclusions

Floor Plan : 4x Bedroom/, 2 Bathroom, 2 Lounge, Staircase

Pre-Fab Container : Fully insulated & pre-painted mist white interior with all fitting accessories.

Walls & Roof : EPS Insulated Panels

Floor : Steel joist with timber floor or vinyl covering

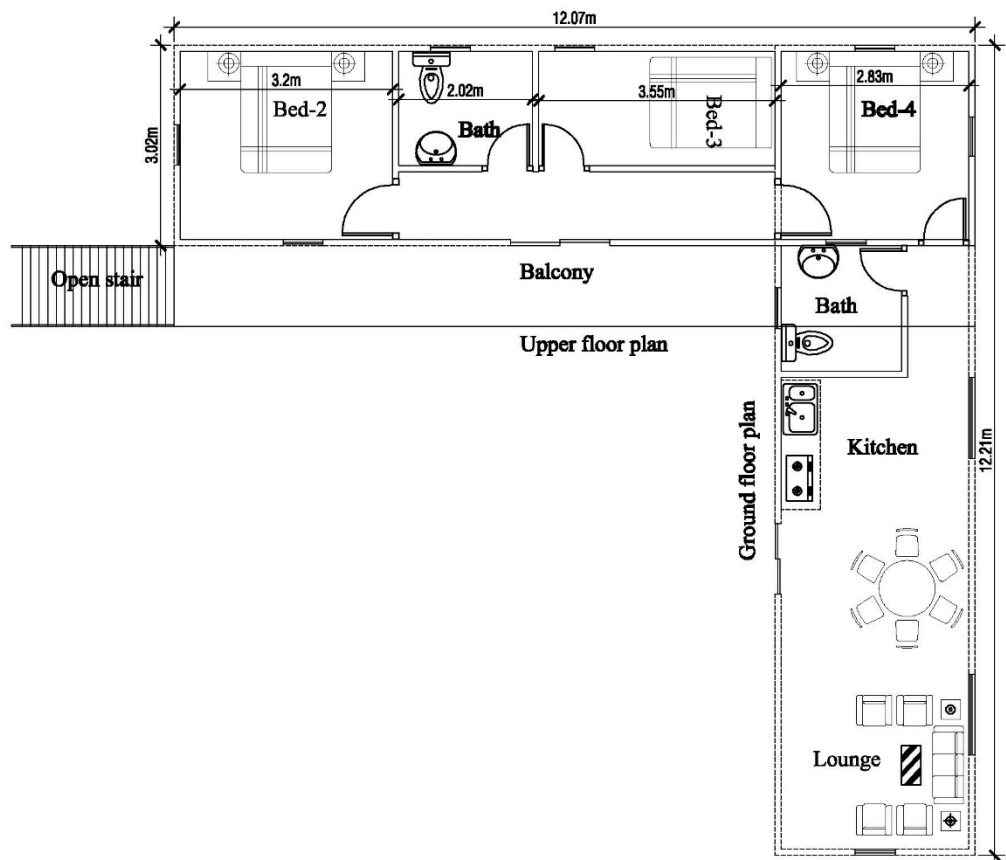
Doors : 1 x Entrance door with lock

Windows : 6 x Aluminium powder coated windows with locks and fly screen

Electrical : 8 x LED Lights & 8 x Electrical Points

2 KING – 4B, L, 2BT, K
LOUNGE, 4 BEDROOM
+KITCHEN+2BATHROOM, STAIRCASE
Transportable & Flat Pack

Sample Floorplans





SparkHomes.com.au

2G KING – 2L, 4B,2B,K
LOUNGE, 3 BEDROOM
+KITCHEN+2BATHROOM, STAIRCASE
Transportable & Flat Pack

Opt 1: Flat Pack (Silver)

Opt 2: Transportable (Gold)

- ✓ **Pre-Fab insulated Container type**
- ✓ **Size - 3.0x 11.8 *2.7m : 35.40 SQM**
- ✓ **Bigger than a 40 Ft.**
- ✓ **Fully functional home**
- ✓ **Ready for Site Delivery**

Our Quality Homes Are
FULLY INSULATED,
Engineered & Built to stringent Australian
Building Codes

GST Additional
Disclaimer: Price is
subject to change
without notice

Opt 1 - \$84,000

Swimming Pool - \$18,000



Add-ons at addition Cost

- Double Glazed doors & windows.
- Glass walls & room partitions walls
- Washroom fittings & Plumbing works
- Flooring tiles, Carpet, Air-con
- Off grid – Solar panel, Solar water heater
- Architecturally designed External cladding
- Kitchen Cabinet, Wardrobe, Appliances
- Design by Architect
- Range of design material to select
- Customized – More than Container size
- Decking with pergola / Awing
- Range of selection options – visit our website
- **Fiancé Option - Available**

Standard Inclusions

Floor Plan : 4/5x Bedroom/, 2 Bathroom, 2 Lounge, Staircase

Pre-Fab Container : Fully insulated & pre-painted mist white interior with all fitting accessories.

Walls & Roof : EPS Insulated Panels

Floor : Steel joist with timber floor or vinyl covering

Doors : 1 x Entrance door with lock

Windows : 6 x Aluminium powder coated windows with locks and fly screen

Electrical : 8 x LED Lights & 8 x Electrical Points

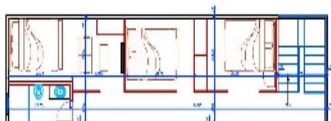
2G KING – 2L, 4B,2B,K
2 LOUNGE, 4/5 BEDROOM
+KITCHEN+2BATHROOM, STAIRCASE
Transportable & Flat Pack

Sample Floorplans

OPTION 1

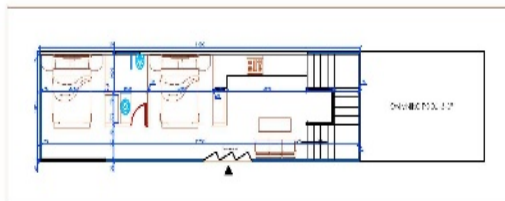


GROUND FLOOR



FIRST FLOOR

OPTION 3



GROUND FLOOR

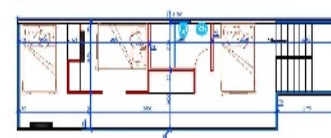


FIRST FLOOR

OPTION 2

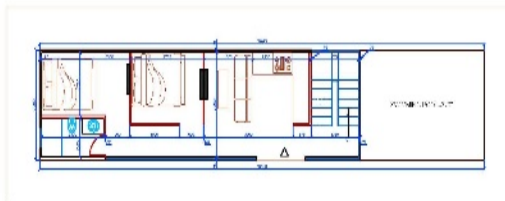


GROUND FLOOR

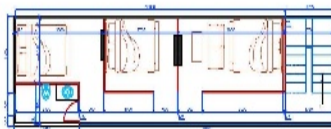


FIRST FLOOR

OPTION 4



GROUND FLOOR



FIRST FLOOR



SparkHomes.com.au

4G KING – 2L, 4B,2B,K
2 LOUNGE, 4/5 BEDROOM
+KITCHEN+2BATHROOM, STAIRCASE
Transportable & Flat Pack

Opt 1: Flat Pack (Silver)

Opt 2: Transportable (Gold)

- ✓ **Pre-Fab insulated Container type**
- ✓ **Size - 3.0x 11.8 *2.7m : 35.40 SQM**
- ✓ **Bigger than a 40 Ft.**
- ✓ **Fully functional home**
- ✓ **Ready for Site Delivery**

Our Quality Homes Are
FULLY INSULATED,
Engineered & Built to stringent Australian
Building Codes

GST Additional
Disclaimer: Price is
subject to change
without notice

Opt 1 - \$160,000

Swimming Pool - \$18,000



Add-ons at addition Cost

- Double Glazed doors & windows.
- Glass walls & room partitions walls
- Washroom fittings & Plumbing works
- Flooring tiles, Carpet, Air-con
- Off grid – Solar panel, Solar water heater
- Architecturally designed External cladding
- Kitchen Cabinet, Wardrobe, Appliances
- Design by Architect
- Range of design material to select
- Customized – More than Container size
- Decking with pergola / Awing
- Range of selection options – visit our website
- **Fiancé Option - Available**

Standard Inclusions

Floor Plan : 4/5x Bedroom/, 2 Bathroom, 2 Lounge, Staircase

Pre-Fab Container : Fully insulated & pre-painted mist white interior with all fitting accessories.

Walls & Roof : EPS Insulated Panels

Floor : Steel joist with timber floor or vinyl covering

Doors : 1 x Entrance door with lock

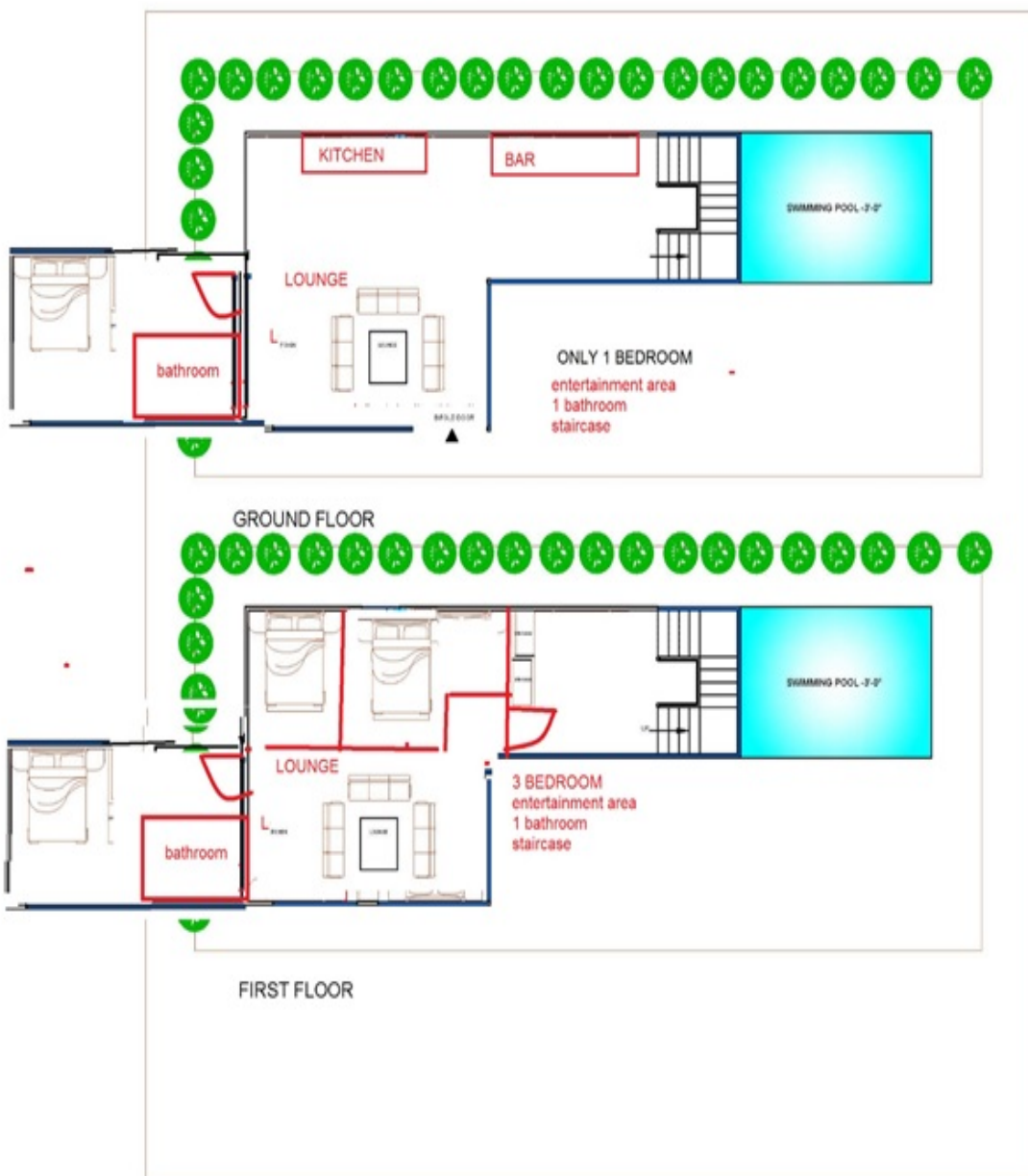
Windows : 6 x Aluminium powder coated windows with locks and fly screen

Electrical : 8 x LED Lights & 8 x Electrical Points

4G KING – 2L, 4B,2B,K 2 LOUNGE, 4/5 BEDROOM +KITCHEN+2BATHROOM, STAIRCASE Transportable & Flat Pack

Sample Floorplans

this is for 4 40 foot container



Frequently Asked Questions (FAQ's)

What is the price?

This is the most commonly asked question, so we want to give you a realistic idea of what one may cost. We provide a base price for each of our standard floor plans with an option sheet which allows you to select various upgrades or, in some cases, remove certain items from the base unit. This will provide you with a fairly accurate cost of the final number of units, with the only variances based on any customizations you may require.

Can we have the option of buying DIY Kits ?

Yes, you do have the option of buying DIY Kits only.

Are they mobile? Can I transport them?

All standard container model are transportable, as they are made of Solid Steel Frames. Standard 17.70sqm model weights around 1.8 T to 2.5 T and 37.7 Sqm around 3.5 T to 5 T each. These units are made to be transported, set in place, and stay put. This means that you could easily move them to a new location or should you sell it. This will just require a call to your local transport company. What it does mean, however, is that this is not something you would likely do yourself on your own trailer. If it is a Glass Container Model, then it has to be fixed at site, only its frame will be transported.

Can two or more Container be put together on Site?

Yes you can put as many together to make one big accommodation, depending on your size and council approvals.

Can our models be customized?

Yes it can fully be customized to your required size and material choice.

All architectural design & engineering certification will be charged additional

Do you offer financing?

We can help direct you with your loans to professional finance people.

Are delivery and set-up included in the price?

Delivery & set-up can be arranged at a additional cost.



What about Set up?

Set-up is not included in the price. We can advise you, what will be required in terms of levelling, running services, etc. We can also discuss the various options for installing/securing the unit. You can then begin this work while we are constructing your container dwelling.

How are they heated and cooled?

You can keep warm in winter and cold in summer with a small cooler or heater as they are designed to be highly energy efficient.

What about codes and zoning?

Codes and zoning will differ depending on the location where the container dwelling will be placed, what it will be used for, and how it will be secured. In some cases it may be considered as outbuilding. In other cases it may be considered a home. In many counties and smaller towns, there may not be any zoning at all. The first thing we recommend is to contact your local council and discuss your plans.

How long does it take to manufacture one?

It takes between 2 to 6 weeks to build a custom container cabin, depending on the design and construction materials. Total time between order and delivery is dependent on the number of cabins being constructed. We can give you a more exact timeframe when you order your cabin.

How are the utilities hooked up?

The utilities (electric, water, sewer/septic) are connected in the same way as they would be in a normal house. Of course, it can be customized based on the need. If hooking to a generator, we can make sure you have the right connection for electric. We can also include gas lines for the hot water heater and stove if you plan to run propane. We discuss all of this with you when designing your container dwelling.

Do you offer Off-grid solar?

Yes we do, we are currently working with a solar company and can easily tailor the units to be "solar ready". We can also work with them to deliver a full or partial off-grid quote specific to your situation.

How thick is a container? How are they constructed?

They are made of strong chassis steel frames and 50 mm insulated panels.



Benefits

Strength and Durability: Containers can resist snow, wind, hurricanes, tornadoes and earthquakes.

Move in the same day: Our containers are custom designed based on the specific usage requirements and preferences of the customer. They can be pre-plumbed, pre-wired, and delivered completely assembled. As long as the required services (water, electric, sewer/septic) are onsite, they can be set, secured, and hooked up the same day. You would be living in the container that evening!

Low maintenance: If you are interested in as little maintenance as possible, we offer metal and vinyl siding options. With metal siding & roof, there is little to no outside maintenance required. This is perfect for a lake cabin or hunting cabin where you do not want to spend your time maintaining the building when you are there to enjoy the time you have away. Also, with the full metal option you will never worry about having to replace boards or siding due to wood rot.

Termite and Insect resistant: The only wood found in the container itself is the flooring. It is 18mm thick with 19 ply plywood, treated to be weather and insect resistant, which is extremely important in the original purpose of shipping materials. The walls are solid steel so there is no surface for termites to eat, the only openings for pests of any kind to enter the container is through any openings cut into the container for doors and windows. All of these openings are insulated and caulked/silicone to prevent weather and insects or rodents from entering. You can put one of these container cabins in the middle of the woods and be confident that it will not be destroyed by insects.

Made for transporting: Containers were specifically designed for transport. There are many tow and transport services which will pick up and deliver the containers. We can help you arrange delivery and placement of the container cabin on your site or you are free to contact your own transport service if you have your own contacts. You are also free to pick up the container cabin yourself if you have the equipment.

Another option, when looking at residing in the container dwelling and you do not yet own land, is to contact a local mobile home park and discuss placing your container home in the park. The advantage to this option is that all utility services are already present.

Meet us for discuss on **larger projects** – School, Holiday homes, Restaurant, Warehouse, High-rise designer hotels, Commercial projects & more

Checkout our Youtube link on Quick build Solution on [PRE-FAB CONTAINER HOMES](#)

****Distributorship enquires are welcome**

*** Finance assistance available**

