

SPARK HOMES
TINY HOME
CREATING NEW
TRENDS IN AUSTRALIA
WITH **QUICK BUILD
TECHNOLOGY**



Tiny Home

Customizable & Comfortable



Watch YouTube link
on [TINY HOMES](#)

****Distributorship
enquires are welcome**

1/6

Cromer

Our quality Tiny Homes are
FULLY INSULATED,
Engineered & Built to stringent
Australian Building Codes

- ✓ Pre-Fab Steel Frame & Chassis
- ✓ Dimension – 2.5m x 6m
- ✓ Fully Functional
- ✓ Architecturally designed



The SPARK - Cromer

The SPARK Philo is a 3.6 Meters long tiny house on wheels with a 10/12 gable roof. It has a bathroom sized to fit a square shower stall, composting or standard toilet, and small wall mounted sink. A small kitchen could be placed in the center of the house. A sleeping loft above the bathroom & kitchen space provide enough space for a queen-sized mattress. Two skylights and a small window open to provide ventilation in the loft.

Design Standards

- Resistant to harsh climate & wind classification C2 (cyclonic)
- Fully insulated (R 1.5), well ventilated & waterproof
- Maximized space utilization with spacious feel
- Engineered Structural Steel Frame & Chassis
- Rough-ins for Electrical & Plumbing – ready for connection
- High Quality ACP panel cladding, Floor, Doors & Windows
- Modular Cabinetry system for Toilet & Kitchen

Options to Select

Option – 1 : We Frame, You Finish

- Exclusive Floor Plans to select.
- Pre-fab Steel Frame for wall & roof
- This is Flat-Pack

\$7,020 + GST

Option – 2 : Easy Assemble

- Exclusive Floor Plans to select.
- Pre-fab Steel Frame
- Colourbond Roof & Ridge cap
- External wall Cladding – Colour bond
- Internal Wall – ACP sheet
- This is Flat-Pack

\$14,040 + GST

Option – 3 : Put Together

- Exclusive Floor Plans to select.
- Pre-fab Steel Frame & Chassis
- Colourbond Roof & Wall Claddings
- Aluminium framed glass Doors & Windows
- Insulation bats (R-2.5) for walls & roof
- Flooring – Vinyl / Linoleum floor cover
- This is Flat-Pack

\$16,200 + GST

Option – 4 : Ready to Live

- All of Option – 3
- Fully installed & finished, ready to go.
- Modular Kitchen: Cabinet, Bench-top & Sink
- Rough-ins : Electrical & Plumbing
- Bathroom vanity, Toilet suite & Tapware
- Electrical: fittings

\$32,400 + GST

This Trailer is only for manoeuvring the unit around your property. Should you need to take the trailer on road regular, will cost extra. Please ask for pricing.

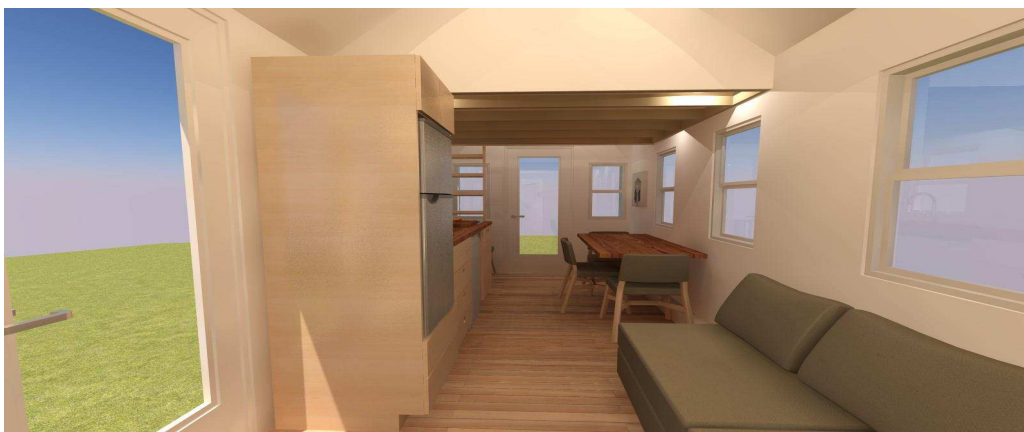
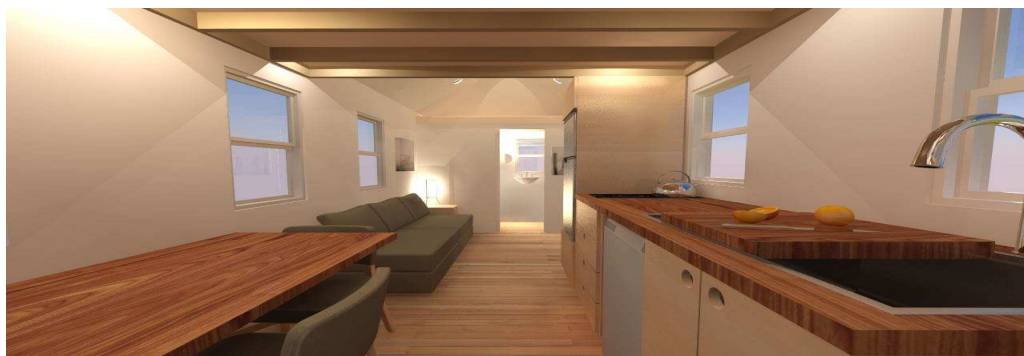
Add-Ons : Internal fittings

- Mirror splash-back & Fiber glass shower cubicle
- Bathroom vanity unit and toilet suite
- Kitchen Cabinet, Wardrobe, Appliances
- Choice of Upgrading to gas from electric
- Flooring – Vinyl / Linoleum, Timber, Carpet
- Split Air Condition, Washing machine
- LPG Instantaneous hot water system

Add-Ons : External fittings

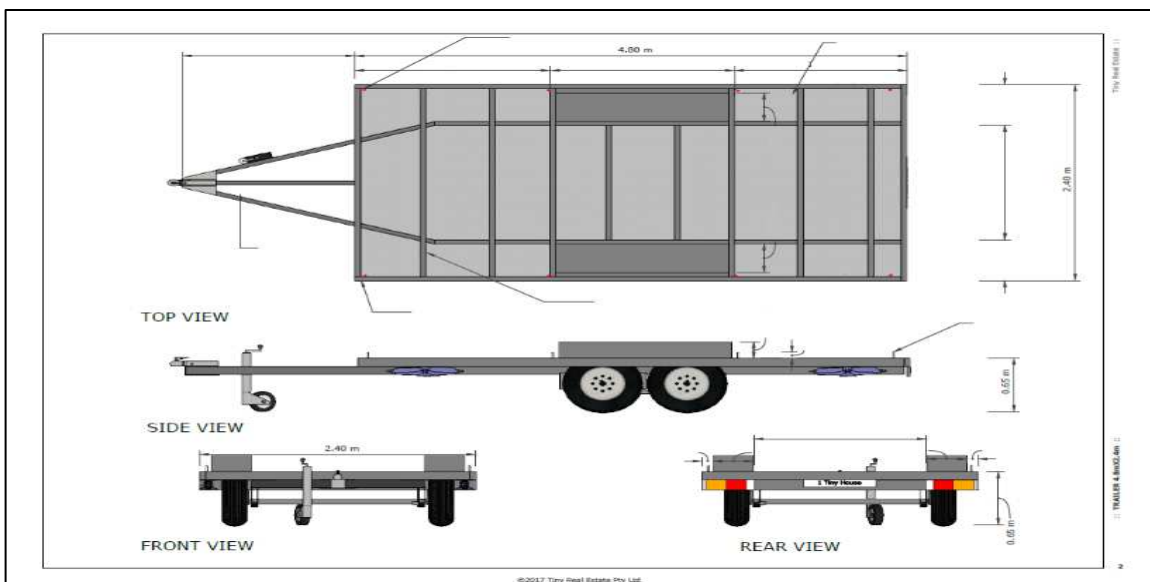
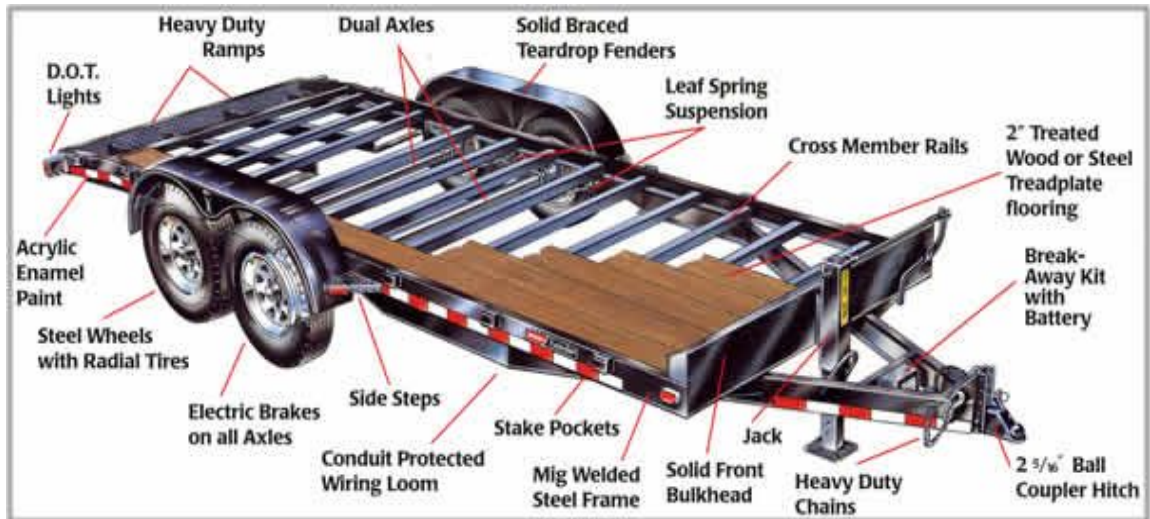
- Hot dipped galvanized chassis
- Road worthy : RMS standard road trailer
- EPS - Wall & Roof Panel
- Fly screens to all windows and door
- Off-grid solar kit - 1.5kW system with battery
- Grey water kit: G-Flow eco diverter, grease trap
- Small entry deck and step kit
- Retractable Awning system
- Double Glazed doors & windows
- Wind turbine roof ventilator
- SkyVent skylight and ventilation system

Cromer Plans & Internal View



Road Worthy Trailer

(Option Please Ask for Pricing)



Frequently Asked Questions (FAQ's)

In the interest of helping you get the most from your tiny home, we're proud to present this collection of FAQs.

Question not covered here? Fill out the form on this page and we'd be happy to answer any questions about tiny homes.

Q. How much does it cost to purchase a tiny home?

A. We have range of options & cost structure to suit your budget. With as less as \$ 10,000 for Steel Frame (Flat Pack) of your tiny home in which you assemble the home yourself, and rest depending upon the design & inclusions it may vary. We can also help make your tiny home dreams come true with a range of flexible buying options depending on your needs, Get in touch with us today to learn more about these buying options.

Q. Can your tiny homes go off the grid?

A. If you want to take your tiny home off the grid, we can make it happen for you with the addition of solar panels with battery storage and a rainwater tank.

Q. What are the benefits of living in a tiny home?

A. There are too many to list here! A tiny home might not be for everyone, but if you think about it, the idea of embracing the tiny home lifestyle can be incredibly appealing for a number of reasons.

Here's just a few:

- Cheaper living expenses, less energy requirements & save a bundle on utilities.
- Ability to purchase a home to call your own for a fraction of the cost of a traditional house.
- Less clutter and possessions in your life
- Opportunity to minimize your carbon footprint
- Flexibility. You can move your tiny home & making them great for people who need to move around a lot for work and aren't able or ready to commit to a traditional home yet.

Q. Do you deliver Australia-wide?

A. We sure do!

Q. What are the benefits of purchasing a tiny home compared to a caravan?

A. Unlike Caravans, Tiny homes are designed with Comfort & Flexibility in mind with towing more of a secondary consideration. It has better energy efficiency & are cheaper than caravans. Tiny Homes are designed to look & feel like home. Tiny home could be right for you If you're looking for semi-permanent dwelling.

Frequently Asked Questions (FAQ's)

- Q. Do I need to obtain DA approval to build a tiny home?
- A. Tiny homes on chasses / trailers and are technically considered to be 'caravans' in Australia. This is because they are not permanent fixtures and do not require a slab. Therefore, Development Approval is not required to build one.
- Q. Do I need a council permit to place a tiny home on my own land?
- A. In regards to this, different councils have different rules. In the case of many councils, you can have one tiny home on your property, but to have more than two, you need special permission. It's better to check with your local council about their specific regulations before purchasing a tiny home. Increasingly, councils are embracing tiny houses as a viable way for people to live.
- Q. Can our models be customized?
- A. Yes it can fully be customized to your required size and material choice.
All architectural design & engineering certification will be charged additional.
- Q. How long does it take to build ? Is there a waiting list?
- A. Build times can vary depending on the model and also if sold as a Part build or Turnkey stage. On average the build process takes around 4-6 weeks. Due to our current workload and the increasing popularity of Tiny homes, we do have a waiting list. However, please feel free to call or email us to discuss this further.
- Q. Do you offer financing?
- A. We can help direct you with your loans to professional finance people.
- Q. How much deposit is required to place an order for a Tiny Home?
- A. We only require a 20% deposit. This guarantees and secures a building slot and delivery date that suits you. Once the deposit is made, we can begin the design process, start the Tiny Home journey together.

Watch YouTube link
on [TINY HOMES](#)

****Distributorship enquires are welcome**

*** Finance assistance available**