

## On-Suite Transportable **Insulated** Bathroom Pod, Australia Made



SPARK PRE-FAB On-Suite Bathroom Pods are the New Trends in AUSTRALIA with **QUICK BUILD TECHNOLOGY**

Your Choice of Shower, Vanity, Pod & Space  
Steel Frame or Insulated EPS panels

*Flexible Design & Lots of Options*



[Watch YouTube link for Quick build Solution on Bathroom Pods](#)

**\*\*Distributorship enquires are welcome**

## MODEL: SB190190TVS Toilet, Vanity & Shower

✓ Size - 1900\*1900mm: 1.71 SqM

### Option 1 : \$ 6500+gst

#### We Frame you finish DIY Kit

Steel Frame only, for your slab

- Toilet, Shower & Vanity
- Ready made blue scope steel frame panels.
- Wall Panel with services holes.
- Wall height 2400mm high.
- Door & Windows.
- Ceiling Steel Frame Panels.
- Paper roll dispenser.

### Option 3 : \$ 31200+ gst

#### Fully Installed ready for site delivery

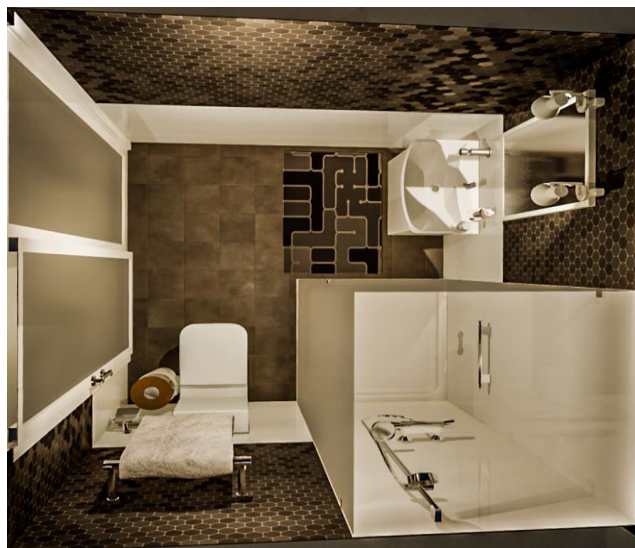
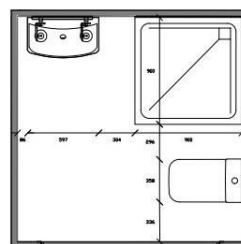
- Toilet, Shower & Vanity
- R 3 Insulation, well ventilated.
- Ready made blue scope steel frame panels.
- Wall panel with services holes.
- Wall height 2400mm high.
- Ceiling and roof
- Interior and exterior wall panels, colour to choose from.
- Door & Windows.
- Electrical & Plumbing already done.
- Paper roll dispenser.
- Vinyl flooring.
- Floor chaise frame.
- Paper roll dispenser.
- Fully functional Installed bathroom pod.
- **Ready for delivery and use. Plug & Play**

### Option -2 : \$ 17550+gst

#### We Supply full kit, you finish it DIY Kit

- Toilet, Shower & Vanity
- Steel Frame Kit for your slab.
- Ready made blue scope steel frame panels.
- Wall Panel with services holes.
- Wall height 2400mm high.
- Ceiling and roof
- Interior and exterior wall panels, colour to choose from.
- Door & Windows.
- Paper roll dispenser.

1900 mm x 1900 mm



**\*\*Finance option available**

**There are many different sizes of Portable/Transportable Luxury Bathrooms that you can choose from to suit your requirements.**

### **Personalize your Luxury Bathroom Plan**

Spark Homes gives you full control over your On-Suite Bathroom Pod, you can choose your layout with a tailor-made floor plan. You can pick the look of the outside and the inside layout. This means you get the Bathroom at the price you can afford.

### **Installation of Plumbing and Electrical**

In the Transportable Model, all Plumbing and Electrical fitting are already Installed to Australian Standards with Qualified plumbers and electricians, all you need to do is have it connected to an inspection Point of the sewer and attach the water connection to a garden pipe connection point, Hot water Heater, and Hot water plumbing can be added at a cost.

### **Delivery**

We deliver our Spark portable/transportable Luxury Bathroom directly to your property for a small fee depending on your location

#### Add-Ons : Internal fittings

- Choice of WC (wall-hung / floor-mounted)
- Flooring – Vinyl / Linoleum, Timber, Tile
- Toughen glass Shower Cubical
- Toilet suites, Shower Panel & Hand basins
- Decorative Shower Screen
- Bath tub
- Spa
- LED lights
- Integrated waste paper bins
- Feature tapware throughout
- Hair Dryer
- Large custom made mirrors
- TV / Media screens for custom vision
- Radio tuner with speaker

#### Add-Ons : External fittings

- Off-grid solar kit system with battery
- Grey water kit: G-Flow eco diverter
- Small entry deck and step kit
- Loft Water tank
- Wind turbine roof ventilator
- Sewer Pump
- Sky-Vent skylight
- LPG Instantaneous hot water system
- Holding sewer tank
- Wheels to roll it.
- Outdoor extended shed

**SPARK Portable/transportable Luxury Bathrooms will be undoubtedly your best choice by far fully installed and just plug and Play.**

## Frequently Asked Questions (FAQ's)

### What is the price?

This is the most commonly asked question, so we want to give you a realistic idea of what one may cost. We provide a base price for each of our standard floor plans with an option sheet that allows you to select various upgrades or, in some cases, remove certain items from the base unit. This will provide you with a fairly accurate cost of the final number of units, with the only variances based on any customizations you may require.

### Can we have the option of buying DIY Kits?

Yes, you do have the option of buying DIY Kits only.

### Are they mobile? Can I transport them?

All standard Bathroom pod models are transportable, as they are made off Steel Frames. These units are made to be transported, set in place, and stay put. This means that you could easily move them to a new location or should you sell it. This will just require a call to your local transport company we could also install wheels beneath for easy moving them around as an option.

### Can our models be customized?

Yes, it can fully be customized to your required size and material choice.

All architectural design & engineering certification will be charged additional

### Do you offer financing?

Yes, we can offer you financing options, please do ask us for this payment option.

### Will delivery and set-up be included in the price?

Transportation / Delivery & set-up charges are additional, We encourage the Client to arrange for Loading, Unloading & transportation, however, It can be arranged at an additional cost.

## Frequently Asked Questions (FAQ's)

### How are they Insulated?

You all our finished transportable Spark On-Suite Bathroom Pod are Insulated.

### How long does it take to manufacture one?

It takes between 2 to 6 weeks to build a custom container cabin, depending on the design and construction materials. The Total time between order and delivery is dependent on the number of Pods being constructed. We can give you a more exact timeframe when you order your Pod.

### How are the utilities hooked up?

These Pods are fitted with appropriate easy fit connectors for Water, Drainage & Sewer lines. It can easily be connected with the Utility lines in the same way as they would be in a normal house. Of course, it can be customized based on the need. If hooking to a generator, we can make sure you have the right connection for electricity. We can also include gas lines for the hot water heater which can be connected with a portable LPG cylinder. We discuss all of this with you when designing your Spark On-Suite Bathroom Pod.

### Do you offer Off-grid solar?

Yes we can easily tailor the units to be "solar ready kit"

Checkout our Youtube link on [On-Suite Transportable Bathroom POD](#)

**\*\*Distributorship enquires are welcome**

**\* Finance assistance available**

*GST Additional Disclaimer: Price is subject to change without notice*