



OUR SPARK PRE FAB INSULATED EXPANDABLE
CONTAINER TRANSPORTABLE
Size: 6300x5850*2480mm Size: 36.85 m2



Options ADD ON for all models:

- Exterior Cladding: Supply & install, \$5,000 + gst
- Gable Roof: \$ 4500 + gst (supply only for full purchase or rent to own only)
- Ceiling high addition: 2600mm \$8000 + gst





TRANSPORTABLE Expandable Container

Open Room can be used for any purpose

Size: 6300x5850*2480mm Size: 36.85 m2

Self-Contained & Insulated

Cost 23,000 + gst

Model No: SPARK E1OR



Standard Inclusions

Pre-Fab Expandable: Fully insulated and pre-painted in a high eco-energy efficient mist white colour.

Walls & Roof: EPS Insulated 75mm Panels to keep cool in summer and warm in winter.

Chassis: Strong steel frame all around for easy transport.

Floor: MGO board, fire-rated.

Flooring: Vinyl/SPC flooring in the color of your choice.

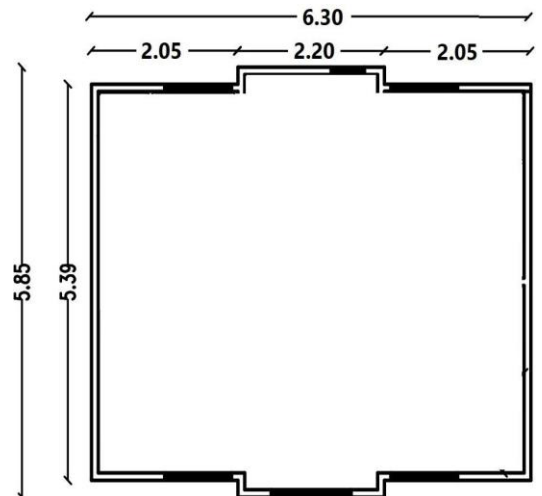
Electrical: 5 LED lights and 4 electrical points.

Doors: 1 Aluminium glass sliding entrance door.

Windows: 4 Aluminium glass sliding windows, powder coated with fly screens and locks.

○ Add-ons at addition Cost

- Double Glazed doors & windows
- Bi Fold Doors, full size.
- Glass walls & room partitions
- Flooring tiles, Carpet, Air-con
- Off grid - Solar panel.
- Hot Water heater.
- Architecturally designed external cladding
- Furniture wardrobe and appliances.
- Range of design building material to select from.
- Top Decking like terrace and stairs.
- Decking with pergola / Awing.
- Deco interior wall panels design
- Customization expandable home to any size
- Finance option - Available.
- Need anything extra please ask for pricing





TRANSPORTABLE Expandable Container

One Bedroom Lounge, Kitchenette + Bathroom

Size: Size: 6300x5850*2480mm Size: 36.85 m2

Self-Contained and Insulated

Cost \$28,000+gst

Model No: SPARK E1BR1BR



Standard Inclusions

Pre-Fab Expandable: Fully insulated and pre-painted in a high eco-energy efficient mist white color.

Walls & Roof: EPS Insulated 75mm Panels to keep cool in summer and warm in winter.

Chassis: Strong steel frame all around for easy transport.

Kitchen: Corner kitchen cabinets with a stone benchtop, sink with a cold flick-mixer tap, base unit, cupboards, and drawers.

Bathroom: Toilet suite, glass shower cubicle with a flick mixer tap on the vanity, and a shaving cabinet with a mirror.

Plumbing: Already plumbed with hot and cold water 20mm pipes, toilet waste 110mm pipe, and gray water 50mm pipes.

Floor: MGO board, fire-rated

Flooring: Vinyl/SPC flooring in the color of your choice.

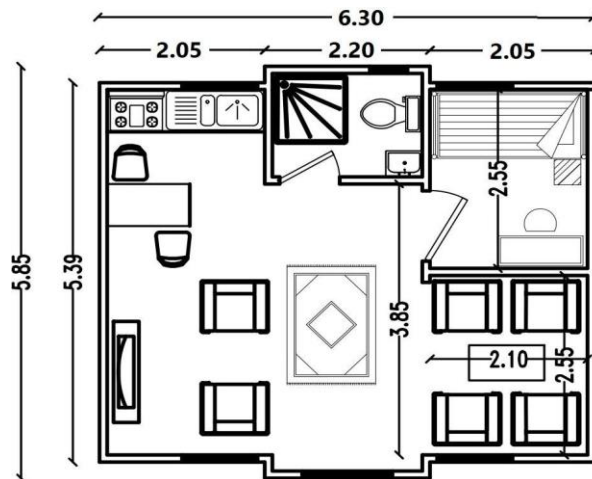
Electrical: 6 LED lights and 6 electrical points.

Doors: 1 aluminum glass sliding entrance door and interior timber doors with locks.

Windows: 5 aluminium glass sliding windows, powder coated with fly screens and locks.

○ Add-ons at addition Cost

- Double Glazed doors & windows
- Bi Fold Doors, full size.
- Glass walls & room partitions
- Flooring tiles, Carpet, Air-con
- Off grid - Solar panel.
- Hot Water heater.
- Architecturally designed external cladding
- Furniture wardrobe and appliances.
- Range of design building material to select from.
- Top Decking like terrace and stairs.
- Decking with pergola / Awning.
- Deco interior wall panels design
- Customization expandable home to any size
- Finance option - Available.
- Need anything extra please ask for pricing





TRANSPORTABLE Expandable Container

Two Bedrooms Lounge, Kitchenette and Bathroom
Size: 6300x5850*2480mm Size: 36.85 m2

Self-Contained and Insulated

Cost \$29,000 +gst

Model No: SPARK E2BR1BR



Standard Inclusions

Pre-Fab Expandable: Fully insulated and pre-painted in a high eco-energy efficient mist white color.

Walls & Roof: EPS Insulated 75mm Panels to keep cool in summer and warm in winter.

Chassis: Strong steel frame all around for easy transport.

Kitchen: Corner kitchen cabinets with a stone benchtop, sink with a cold flick-mixer tap, base unit, cupboards, and drawers.

Bathroom: Toilet suite, glass shower cubicle with a flick mixer tap on the vanity, and a shaving cabinet with a mirror.

Plumbing: Already plumbed with hot and cold water 20mm pipes, toilet waste 110mm pipe, and gray water 50mm pipes.

Floor: MGO board, fire-rated

Flooring: Vinyl/SPC flooring in the color of your choice.

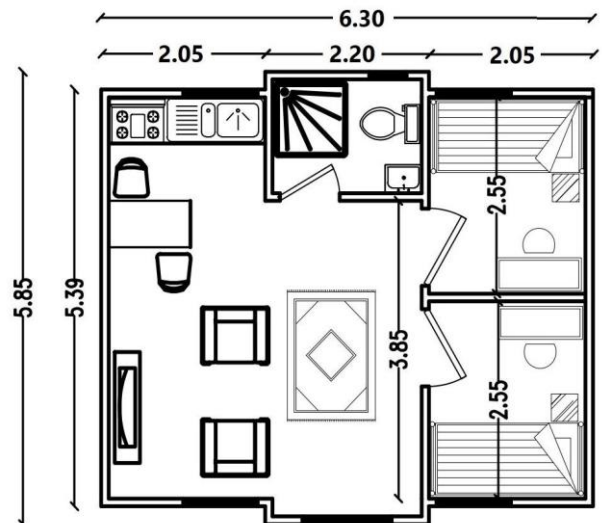
Electrical: 6 LED lights and 6 electrical points.

Doors: 1 aluminum glass sliding entrance door and interior timber doors with locks.

Windows: 6 aluminium glass sliding windows, powder coated with fly screens and locks.

Add-ons at addition Cost

- ✓ Double Glazed doors & windows
- ✓ .- Bi Fold Doors, full size.
- ✓ Glass walls & room partitions
- ✓ Flooring tiles, Carpet, Air-con
- ✓ Off grid – Solar panel.
- ✓ Hot Water heater.
- ✓ Architecturally designed external cladding
- ✓ Furniture wardrobe and appliances.
- ✓ Range of design building material to select from.
- ✓ Top Decking like terrace and stairs.
- ✓ Decking with pergola / Awing.
- ✓ Deco interior wall panels design
- ✓ Customization expandable home to any size
- ✓ Finance option - Available.
- ✓ Need anything extra please ask for pricing





TRANSPORTABLE Expandable Container

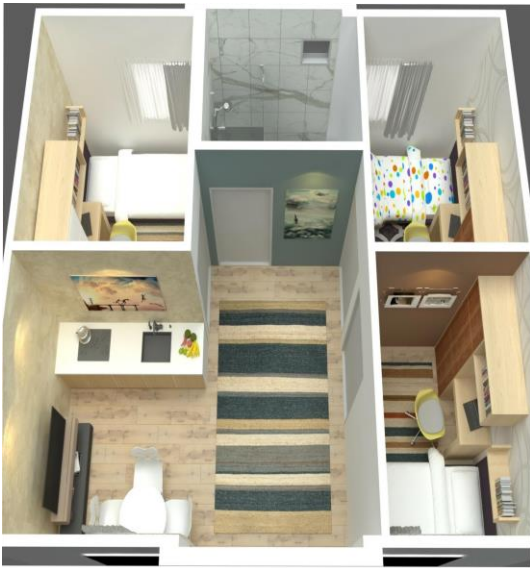
Three Bedrooms Lounge, Kitchenette and Bathroom

Size: 6300x5850*2480mm Size: 36.85 m2

Self-Contained and Insulated

Cost - \$ 31,000+gst

Model No: SPARK E3BR1ST



Standard Inclusions

Pre-Fab Expandable: Fully insulated and pre-painted in a high eco-energy efficient mist white color.

Walls & Roof: EPS Insulated 75mm Panels to keep cool in summer and warm in winter.

Chassis: Strong steel frame all around for easy transport.

Kitchen: Corner kitchen cabinets with a stone benchtop, sink with a cold flick-mixer tap, base unit, cupboards, and drawers.

Bathroom: Toilet suite, glass shower cubicle with a flick mixer tap on the vanity, and a shaving cabinet with a mirror.

Plumbing: Already plumbed with hot and cold water 20mm pipes, toilet waste 110mm pipe, and gray water 50mm pipes.

Floor: MGO board, fire-rated

Flooring: Vinyl/SPC flooring in the color of your choice.

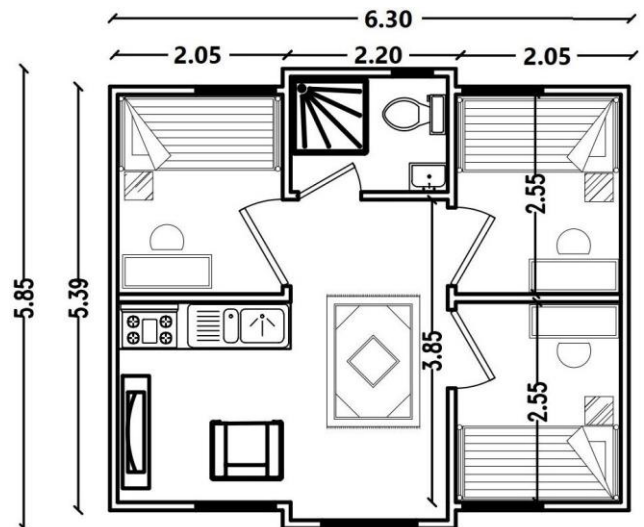
Electrical: 6 LED lights and 6 electrical points.

Doors: 1 aluminum glass sliding entrance door and interior timber doors with locks.

Windows: 6 aluminium glass sliding windows, powder coated with fly screens and locks.

Add-ons at addition Cost

- ✓ Double Glazed doors & windows
- ✓ .- Bi Fold Doors, full size.
- ✓ Glass walls & room partitions
- ✓ Flooring tiles, Carpet, Air-con
- ✓ Off grid – Solar panel.
- ✓ Hot Water heater.
- ✓ Architecturally designed external cladding
- ✓ Furniture wardrobe and appliances.
- ✓ Range of design building material to select from.
- ✓ Top Decking like terrace and stairs.
- ✓ Decking with pergola / Awing.
- ✓ Deco interior wall panels design
- ✓ Customization expandable home to any size
- ✓ Finance option - Available.
- ✓ Need anything extra please ask for pricing





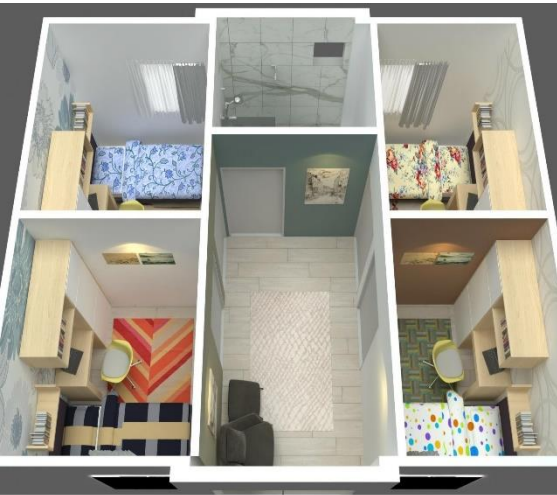
TRANSPORTABLE Expandable Container

Four Bedrooms sitting lounge, kitchen, bathroom
Size: 6300x5850*2480mm Size: 36.85 m2

Self-Contained and Insulated

Cost - \$ 33,000+gst

Model No: SPARK E4BR1ST



Standard Inclusions

Pre-Fab Expandable: Fully insulated and pre-painted in a high eco-energy efficient mist white color.

Walls & Roof: EPS Insulated 75mm Panels to keep cool in summer and warm in winter.

Chassis: Strong steel frame all around for easy transport.

Kitchen: Corner kitchen cabinets with a stone benchtop, sink with a cold flick-mixer tap, base unit, cupboards, and drawers.

Bathroom: Toilet suite, glass shower cubicle with a flick mixer tap on the vanity, and a shaving cabinet with a mirror.

Plumbing: Already plumbed with hot and cold water 20mm pipes, toilet waste 110mm pipe, and gray water 50mm pipes.

Floor: MGO board, fire-rated

Flooring: Vinyl/SPC flooring in the color of your choice.

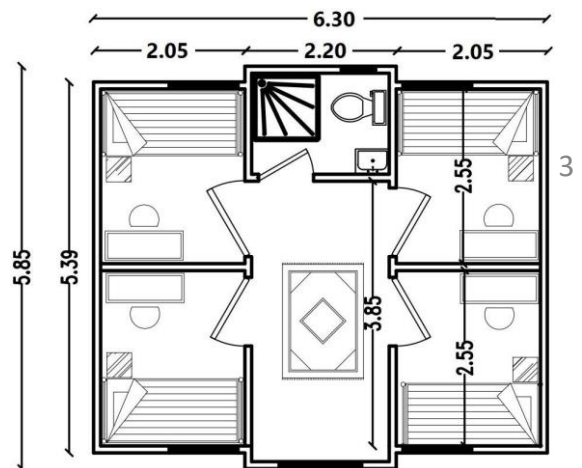
Electrical: 6 LED lights and 6 electrical points.

Doors: 1 aluminum glass sliding entrance door and interior timber doors with locks.

Windows: 6 aluminium glass sliding windows, powder coated with fly screens and locks.

Add-ons at addition Cost

- ✓ Double Glazed doors & windows
- ✓ .▪ Bi Fold Doors, full size.
- ✓ Glass walls & room partitions
- ✓ Flooring tiles, Carpet, Air-con
- ✓ Off grid – Solar panel.
- ✓ Hot Water heater.
- ✓ Architecturally designed external cladding
- ✓ Furniture wardrobe and appliances.
- ✓ Range of design building material to select from.
- ✓ Top Decking like terrace and stairs.
- ✓ Decking with pergola / Awing.
- ✓ Deco interior wall panels design
- ✓ Customization expandable home to any size
- ✓ Finance option - Available.
- ✓ Need anything extra please ask for pricing



TRANSPORTABLE Expandable Container

Open room one two, three and four Bedroom, Lounge, Kitchenette and Bathroom
 Size: 6300x5850*2480mm Size: 36.85 m2

FULLY INSULATED

AUD 5,000 deposit, refundable

Minium 12 months for Rent

- Open room \$ 300 + per week
- 1 Bedroom \$360+ per week
- 2 Bedroom \$ 420+ per week
- 3 Bedroom \$ 480+ per week
- 4 Bedroom \$ 520+ per week

AUD 2,000 deposit nonrefundable

Rent to Own approx.

- Open room \$ 250 + per week
- 1 Bedroom \$310+ per week
- 2 Bedroom \$ 370+ per week
- 3 Bedroom \$ 430+ per week
- 4 Bedroom \$ 470+ per week

Open Room



1 Bedroom
+ full bath



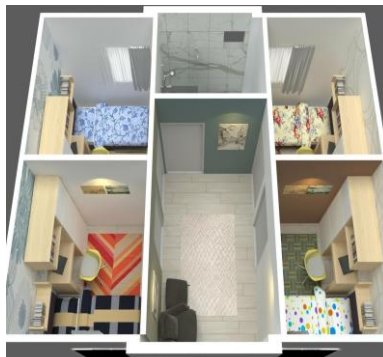
2 Bedroom
+ full bath



3 Bedroom
+ full bath

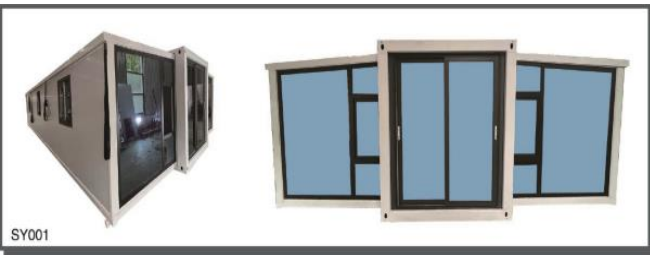


4 Bedroom
+ full bath



Real pictures





Gable Roof Option Add on



OUR PRODUCTS

high quality, high performance

CHOOSE YOUR
DESIGN AND
COLOUR

Exterior cladding option, any design with colour choice

Spark Siding



Tile Series

MORE

Spark Siding



Big Tile Series

MORE

Spark Siding



Marble Series

MORE

Spark Siding



Big Brick Series

MORE

Spark Siding



Mosaic Series

MORE

Spark Siding



Wood Series

MORE

Spark Siding



Wood Series - W

MORE

Spark Siding



Spray Grain Series

MORE

Spark Siding



Spray Grain Series - W

MORE

Spark Siding



Stone Series

MORE

Spark Siding



Strips Series

MORE

Spark Siding



Cultured Stone Series

MORE

Spark Siding



Fine Brick Series

MORE

Spark Siding



Small Brick Series

MORE

Spark Siding



Great Wall Series

MORE

Spark Siding



MORE

Option for Interior DECO wall panel

PRODUCT DETAILS



Product name	PVC marble sheet		
Material	PVC +calcium powder+ additive		
Composition	PVC base board+ hot stamping film+ UV-curing paint		
Surface color	Marble, wood grain, solid color, 3D color and also can customized		
Feature	Eco-friendly, fireproof, waterproof, anti-scratch, easy to install and maintain, long life		
Size(mm)	1220*2440mm or other sizes (need to negotiate)		
Thickness(mm)	2.0-3.0mm (tolerance ± 0.05)	1.8mm, 10.4kg/pc 2.0mm, 12.4kg/pc 2.5mm, 15.5kg/pc 2.8mm, 17.3kg/pc 3.0mm, 18.6kg/pc	2300pcs/20'GP 2000pcs/20'GP 1600pcs/20'GP 1400pcs/20'GP 1300pcs/20'GP



SPARK EXPANDABLE HOMES – FAQ

What is the minimum time to buy Expandable Homes?

The minimum time to make an order is 2 months if not in stock.

What is the minimum time to hire or rent these?

The minimum rental period is 12 months.

Can we pay an advance and pay the rest on weekly rent?

Yes, you can decide the advance amount you would like to pay, and the rest can be arranged through financing.

What is the cost of an Expandable Home?

This is the most commonly asked question. We provide a base price for each of our floor plans on the specific page. Additionally, we have an options sheet that allows you to select various upgrades or, in some cases, remove certain items from the base unit. This will provide you with a fairly accurate cost, with variances based on any customizations you may require.

Are they mobile? Can I transport them?

Yes, standard container models are transportable, made of solid steel frames for easy transport. These units, weighing around 3.5 to 5 tonnes each, are designed to be transported, set in place, and stay put. While you can move them to a new location if needed, it will require a call to your local transport company, as this is not something you would likely do yourself.

Can two or more prefab expandable transportable homes be put together on site?

Yes, you can combine multiple units to create larger accommodations or multiple houses, depending on your size requirements and council approvals.

Can our models be customized?

Yes, they can be fully customized to your required size and material choice.

**Do you offer financing?**

Yes, we can help you with financing options.

Are delivery and set-up included in the price?

Delivery can be arranged at an additional cost.

What about set-up?

Set-up is not included in the price. However, we can advise you on what will be required in terms of leveling and running services. The internal plumbing and electrical work are already completed. We can also discuss various options for installing and securing the unit. You can begin this preparatory work while we construct your expandable home.

Do you offer customization for expandable homes?

Yes, we do. Just provide us with detailed information about what you are looking for.

How are they heated and cooled?

SPARK Expandable Homes are designed to be highly energy-efficient, keeping warm in winter and cool in summer with a small cooler or heater.

What about codes and zoning?

Codes and zoning regulations vary depending on the city and county where the expandable home will be placed, its intended use, and how it will be secured. In some cases, it may be considered an outbuilding, while in others, it may be considered a home. We recommend contacting your local council to discuss your plans.

How long does it take to build one if not in stock?

Building a custom expandable home takes between 8 to 12 weeks, depending on our workload and the specifics of the design and construction materials. The total time from order to delivery depends on the number of units being constructed. We will provide a more accurate timeframe when you place your order.

How are the utilities hooked up?

Utilities (electric, water, sewer/septic) are connected similarly to a normal house. We can customize these connections based on your needs. For example, we can ensure the right connection for a generator or include gas lines for a hot water heater and stove if you plan to use propane. All these details are discussed during the design phase of your expandable home.



SPARK EXPANDABLE HOMES - Benefits

Strength and Durability SPARK Expandable Homes are designed to withstand extreme weather conditions, including snow, wind, hurricanes, tornadoes, and earthquakes. Please discuss your specific requirements with us before purchasing.

Move in the Same Day Our homes are custom designed based on your specific requirements and preferences. They can be pre-plumbed, pre-wired, and delivered completely assembled. As long as the required services (water, electric, sewer/septic) are on-site, your SPARK Expandable Home can be set, secured, and hooked up the same day. You could be living in your new home that evening!

Low Maintenance For those interested in minimal maintenance, we offer metal and vinyl siding options. With metal siding and a metal roof, there is little to no outside maintenance required. This is perfect for a lake cabin or hunting cabin where you want to enjoy your time without worrying about upkeep. With our full metal option, you will never need to replace boards or siding due to wood rot.

Termite and Insect Resistant The only wood in our expandable homes is the flooring, which is made of 18mm thick, 19-ply plywood treated to be weather and insect resistant. The walls are solid steel, providing no surface for termites to eat. The solid construction of the home ensures that the only openings for pests are through doors and windows, which are insulated and sealed to prevent entry. You can place a SPARK Expandable Home in the middle of the woods with confidence that it will not be destroyed by insects as long as you seal everything properly.

Made for Transporting SPARK Expandable Homes are specifically designed for easy transport. Many tow and transport services can pick up and deliver your home. We can help arrange delivery and placement at your site for an additional cost, or you can use your own transport service. If you have the equipment, you can also pick up the home yourself.

If you don't yet own land, another option is to place your SPARK Expandable Home in a local mobile home park. This option provides the advantage of having all utility services already present.