

SPARK

SparkHomes.com.au

INSULATED PRE-FAB CONTAINER TYPE



SPARK HOMES
PRE-FAB CONTAINER
CREATING NEW
TRENDS IN
AUSTRALIA WITH
QUICK BUILD
TECHNOLOGY

Transportable & Flat Pack Model

35.40 SQM

Lounge, Bedroom, Kitchen, Bathroom

Flexible stack up design with multiple units



Click
Here

Watch You tube link for
Quick build Solution on

[PRE-FAB CONTAINER HOMES](#)

****Distributorship
enquires are welcome**

Transportable & Flat Pack

- Opt 1: Flat Pack (Silver)
- Opt 2: Transportable (Gold)

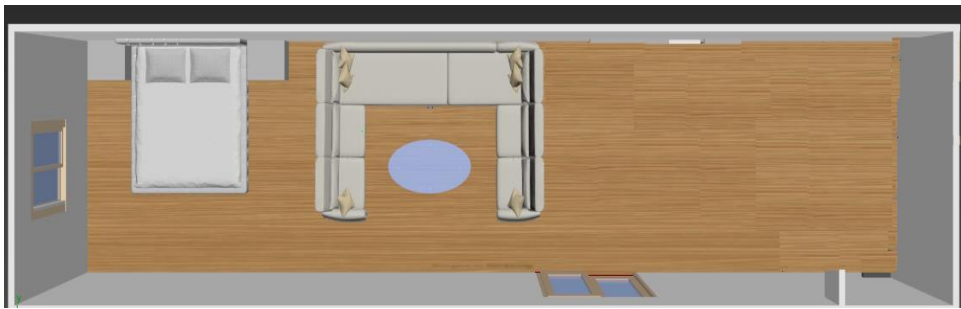
- ✓ Pre-Fab insulated Container type
- ✓ Size - 3.0x 11.8 *2.7m : 35.40 SQM
- ✓ Bigger than a 40 Ft.
- ✓ Fully functional home
- ✓ Ready for Site Delivery

Our Quality Homes Are
FULLY INSULATED,
Engineered & Built to stringent Australian
Building Codes

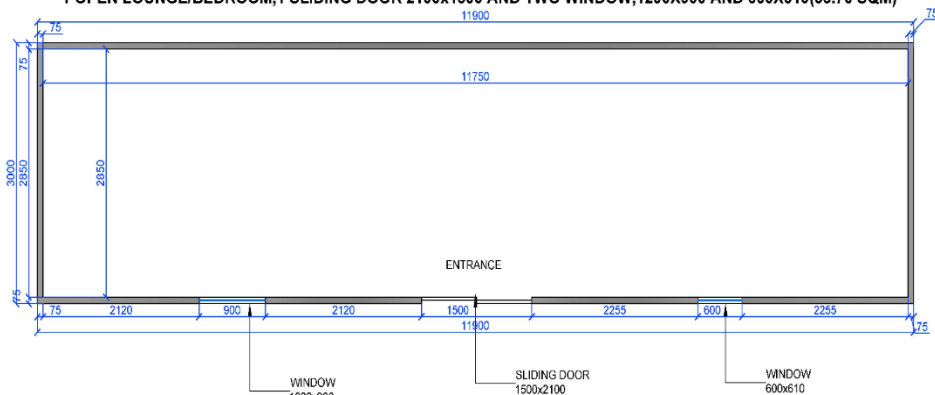
Opt 1 - \$ 32,000

Opt 2 - \$ 42,000

GST Additional
Disclaimer: Price is
subject to change without
notice



1 OPEN LOUNGE/BEDROOM, 1 SLIDING DOOR 2100x1500 AND TWO WINDOW, 1200X900 AND 600X610 (35.70 SQM)



Add-ons at additional cost

- Double Glazed doors & windows.
- Glass walls & room partitions walls
- Washroom fittings & Plumbing works
- Flooring tiles, Carpet, Air-con
- Off grid – Solar panel, Solar water heater
- Architecturally designed External cladding
- Kitchen Cabinet, Wardrobe, Appliances
- Design by Architect
- Range of design material to select
- Customized – More than Container size
- Decking with pergola / Awing
- Range of selection options – visit our website
- Fiancé Option - Available

Standard Inclusions

Floor Plan : 1 x Bedroom, Open lounge, Bathroom

Pre-Fab Container : Fully insulated & pre-painted mist white interior with all fitting accessories.

Walls & Roof : EPS Insulated Panels

Wall partition: 2 x Insulated pre-painted EPS panel

Floor : Steel joist with timber floor or vinyl covering

Doors : 1 x Entrance door & 2 x internal door with lock

Windows : 4 x Aluminium powder coated windows with locks and fly screen

Electrical : 5 x LED Lights & 3 x Electrical Points (option – 2 only)

KING – OR, 1BT One open room with Bathroom Transportable & Flat Pack

Opt 1: Flat Pack (Silver)
Opt 2: Transportable (Gold)

- ✓ Pre-Fab insulated Container type
- ✓ Size - 3.0x 11.8 *2.7m : 35.40 SQM
- ✓ Bigger than a 40 Ft.
- ✓ Fully functional home
- ✓ Ready for Site Delivery

Our Quality Homes Are
FULLY INSULATED,
Engineered & Built to stringent Australian
Building Codes

Opt 1 - \$ 35,500

Opt 2 - \$ 47,000

GST Additional
Disclaimer: Price is
subject to change without
notice



Add-ons at addition Cost

- Double Glazed doors & windows.
- Glass walls & room partitions walls
- Washroom fittings & Plumbing works
- Flooring tiles, Carpet, Air-con
- Off grid – Solar panel, Solar water heater
- Architecturally designed External cladding
- Kitchen Cabinet, Wardrobe, Appliances
- Design by Architect
- Range of design material to select
- Customized – More than Container size
- Decking with pergola / Awing
- Range of selection options – visit our website
- **Fiancé Option - Available**

Standard Inclusions

Floor Plan : 1 x Bedroom, Open lounge, Bathroom

Pre-Fab Container : Fully insulated & pre-painted mist white interior with all fitting accessories.

Walls & Roof : EPS Insulated Panels

Wall partition: 2 x Insulated pre-painted EPS panel

Floor : Steel joist with timber floor or vinyl covering

Doors : 1 x Entrance door & 2 x internal door with lock

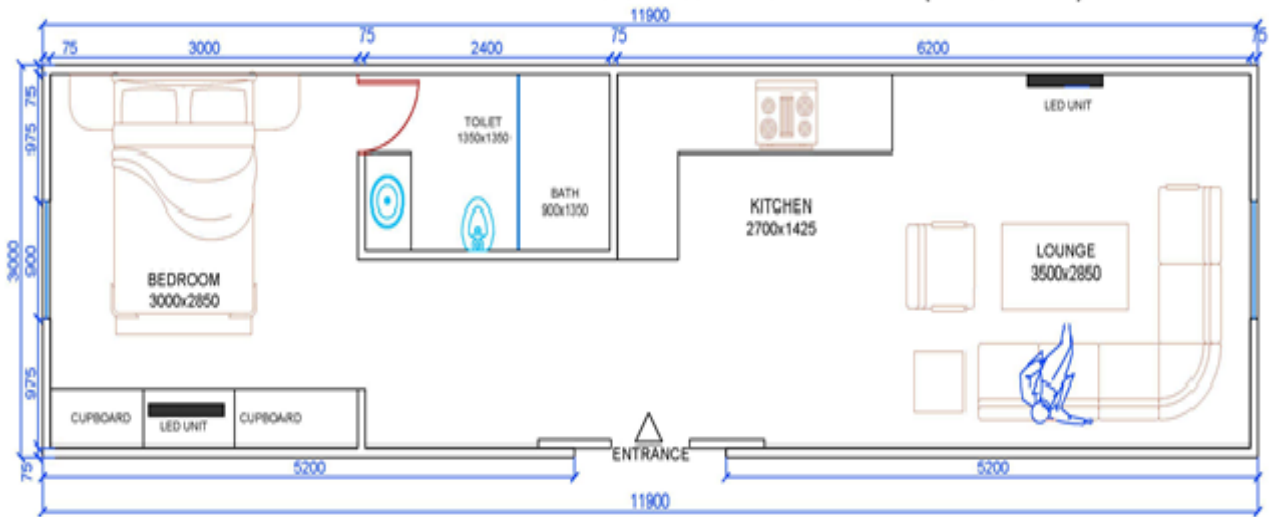
Windows : 4 x Aluminium powder coated windows with locks and fly screen

Electrical : 5 x LED Lights & 3 x Electrical Points
(option – 2 only)

Extra: Aud: 9,000 per for Plumbing, Kitchen & Bathroom PC items

KING – OR, 1BT
One open room with Bathroom
Transportable & Flat Pack

Sample Floorplans



KING -1B, L, BT,K

1 BEDROOM +
LOUNGE+KITCHEN+BATHROOM
Transportable & Flat Pack

Opt 1: Flat Pack (Silver)
Opt 2: Transportable (Gold)

- ✓ Pre-Fab insulated Container type
- ✓ Size - 3.0x 11.8 *2.7m : 35.40 SqM
- ✓ Bigger than a 40 Ft.
- ✓ Fully functional home
- ✓ Ready for Site Delivery

Our Quality Homes Are
FULLY INSULATED,
Engineered & Built to stringent Australian
Building Codes

Opt 1 - \$38,000

Opt 2 - \$50,000

*GST Additional
Disclaimer: Price is
subject to change
without notice*



Add-ons at addition Cost

- Double Glazed doors & windows.
- Glass walls & room partitions walls
- Washroom fittings & Plumbing works
- Flooring tiles, Carpet, Air-con
- Off grid – Solar panel, Solar water heater
- Architecturally designed External cladding
- Kitchen Cabinet, Wardrobe, Appliances
- Design by Architect
- Range of design material to select
- Customized – More than Container size
- Decking with pergola / Awing
- Range of selection options – visit our website
- Fiancé Option - Available

Standard Inclusions

Floor Plan : 1 x Bedroom/Open lounge/Bathroom

Pre-Fab Container : Fully insulated & pre-painted mist white interior with all fitting accessories.

Walls & Roof : EPS Insulated Panels

Floor : Steel joist with timber floor or vinyl covering

Doors : 1 x Entrance door with lock

Windows : 6 x Aluminium powder coated windows with locks and fly screen

Electrical : 3 x LED Lights & 3 x Electrical Points

Bedroom : 1 Bedroom

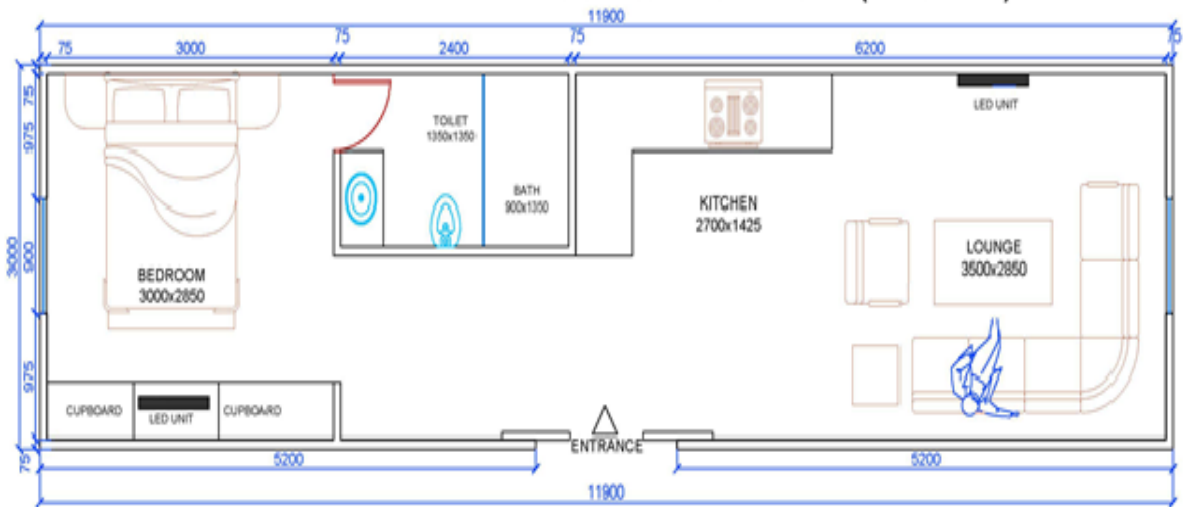
Extra: Aud: 9,000 per for Plumbing, Kitchen & Bathroom PC items

KING -1B, L, BT,K
1 BEDROOM +
LOUNGE+KITCHEN+BATHROOM
M

Transportable & Flat Pack

Sample Floorplans

1 OPEN LOUNGE/KITCHEN+BEDROOM+BATHROOM(35.70 SQM)



OPTION 1(35.70SQM.)

KING -2B, L, BT,K

2 BEDROOM +

LOUNGE+KITCHEN+1BATHROOM

Transportable & Flat Pack

Opt 1: Flat Pack (Silver)

Opt 2: Transportable (Gold)

- ✓ Pre-Fab insulated Container type
- ✓ Size - 3.0x 11.8 *2.7m : 35.40 SqM
- ✓ Bigger than a 40 Ft.
- ✓ Fully functional home
- ✓ Ready for Site Delivery

Our Quality Homes Are
FULLY INSULATED,
 Engineered & Built to stringent Australian
 Building Codes

Opt 1 - \$39,500

Opt 2 - \$52,500

*GST Additional
 Disclaimer: Price is
 subject to change
 without notice*



Add-ons at addition Cost

- Double Glazed doors & windows.
- Glass walls & room partitions walls
- Washroom fittings & Plumbing works
- Flooring tiles, Carpet, Air-con
- Off grid – Solar panel, Solar water heater
- Architecturally designed External cladding
- Kitchen Cabinet, Wardrobe, Appliances
- Design by Architect
- Range of design material to select
- Customized – More than Container size
- Decking with pergola / Awing
- Range of selection options – visit our website
- **Fiancé Option - Available**

Standard Inclusions

Floor Plan : 2x Bedroom/Open lounge/Bathroom

Pre-Fab Container : Fully insulated & pre-painted mist white interior with all fitting accessories.

Walls & Roof : EPS Insulated Panels

Floor : Steel joist with timber floor or vinyl covering

Doors : 1 x Entrance door with lock

Windows : 4 x Aluminium powder coated windows with locks and fly screen

Electrical : 4 x LED Lights & 5 x Electrical Points

Bedroom : 2 Bedroom

Extra: Aud: 9,000 per for Plumbing, Kitchen & Bathroom PC items

KING -2B, L, 2BT,K **2 BEDROOM +** **LOUNGE+KITCHEN+2BATHROOM** **Transportable & Flat Pack**

Opt 1: Flat Pack (Silver)
Opt 2: Transportable (Gold)

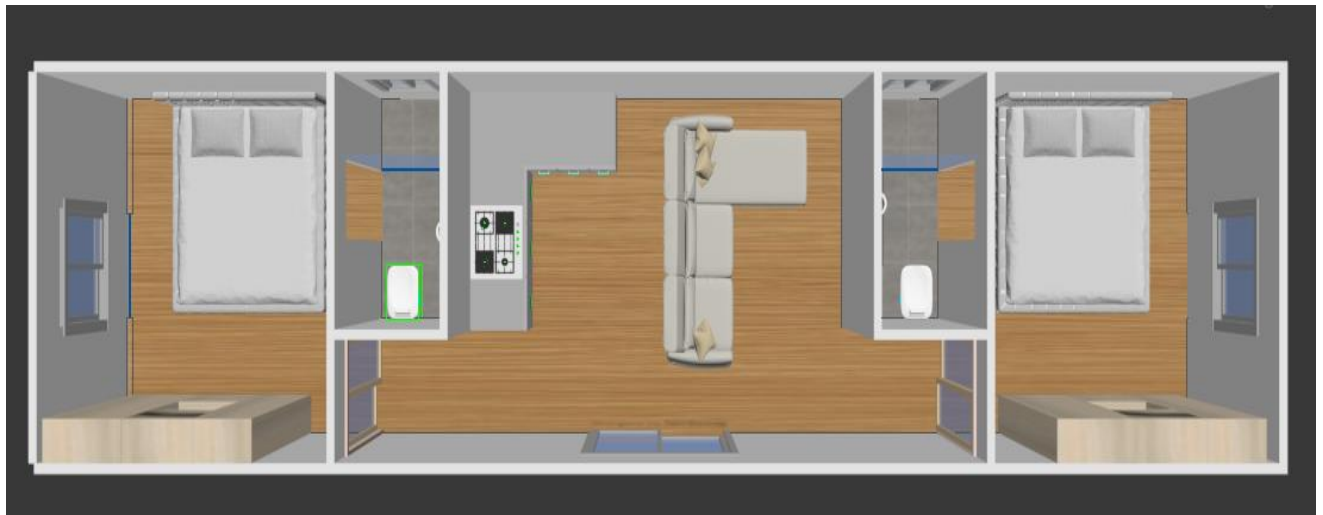
- ✓ **Pre-Fab insulated Container type**
- ✓ **Size - 3.0x 11.8 *2.7m : 35.40 SQM**
- ✓ **Bigger than a 40 Ft.**
- ✓ **Fully functional home**
- ✓ **Ready for Site Delivery**

Our Quality Homes Are
FULLY INSULATED,
Engineered & Built to stringent Australian
Building Codes

Opt 1 - \$40,000

Opt 2 - \$54,000

GST Additional
Disclaimer: Price is
subject to change
without notice



Add-ons at addition Cost

- Double Glazed doors & windows.
- Glass walls & room partitions walls
- Washroom fittings & Plumbing works
- Flooring tiles, Carpet, Air-con
- Off grid – Solar panel, Solar water heater
- Architecturally designed External cladding
- Kitchen Cabinet, Wardrobe, Appliances
- Design by Architect
- Range of design material to select
- Customized – More than Container size
- Decking with pergola / Awing
- Range of selection options – visit our website
- **Fiancé Option - Available**

Standard Inclusions

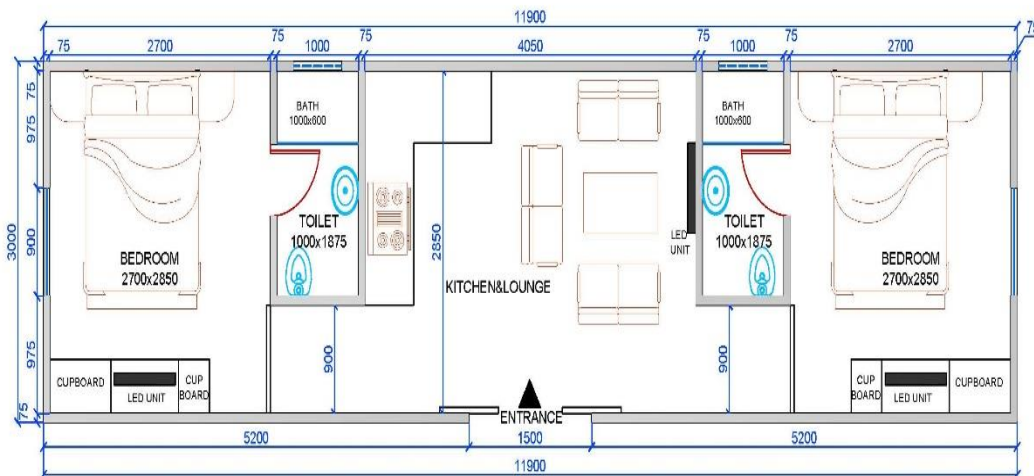
- Floor Plan :** 2x Bedroom/Open lounge/2 Bathroom
- Pre-Fab Container :** Fully insulated & pre-painted mist white interior with all fitting accessories.
- Walls & Roof :** EPS Insulated Panels
- Floor :** Steel joist with timber floor or vinyl covering
- Doors :** 1 x Entrance door with lock
- Windows :** 4 x Aluminium powder coated windows with locks and fly screen
- Electrical :** 6 x LED Lights & 6 x Electrical Points
- Bedroom :** 2 Bedroom
- Bathroom :** 2 Bathroom

Extra: Aud: 9,000 per for Plumbing, Kitchen & Bathroom PC items

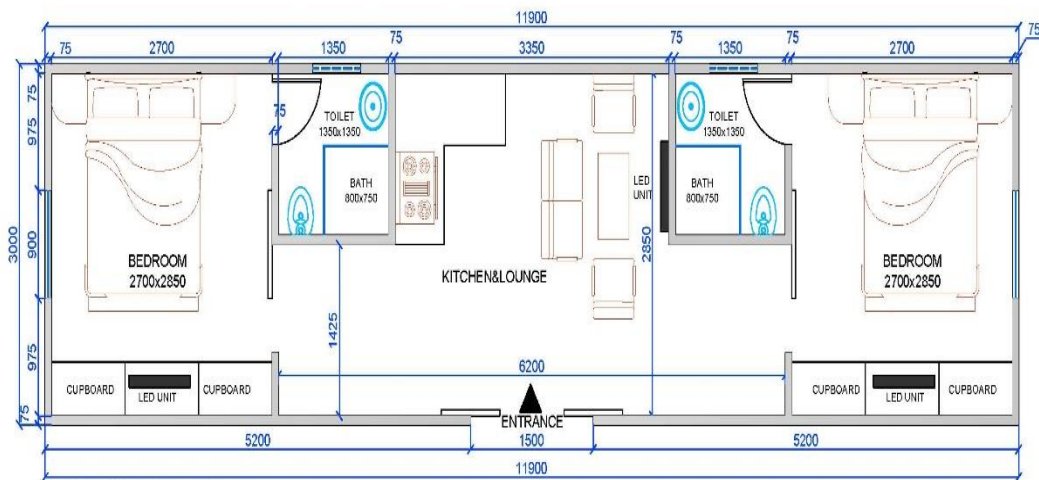
KING -2B, L, 2BT,K
2 BEDROOM +
LOUNGE+KITCHEN+2BATHROOM
Transportable & Flat Pack

Sample Floorplans

1 OPEN LOUNGE/KITCHEN+2 (BEDROOM)+BATHROOM(35.70 SQM)



OPTION 1(35.70SQM.)



OPTION 2(35.70SQM.)

KING – 3B,BT,K **3 BEDROOM, BATHROOM** **Transportable & Flat Pack**

Opt 1: Flat Pack (Silver)
Opt 2: Transportable (Gold)

- ✓ Pre-Fab insulated Container type
- ✓ Size - 3.0x 11.8 *2.7m : 35.40 SQM
- ✓ Bigger than a 40 Ft.
- ✓ Fully functional home
- ✓ Ready for Site Delivery

Our Quality Homes Are
FULLY INSULATED,
Engineered & Built to stringent Australian
Building Codes

Opt 1 - \$41,500

Opt 2 - \$55,500

GST Additional
Disclaimer: Price is
subject to change
without notice



Add-ons at addition Cost

- Double Glazed doors & windows.
- Glass walls & room partitions walls
- Washroom fittings & Plumbing works
- Flooring tiles, Carpet, Air-con
- Off grid – Solar panel, Solar water heater
- Architecturally designed External cladding
- Kitchen Cabinet, Wardrobe, Appliances
- Design by Architect
- Range of design material to select
- Customized – More than Container size
- Decking with pergola / Awing
- Range of selection options – visit our website
- Fiancé Option - Available

Standard Inclusions

- Floor Plan :** 3x Bedroom/, 1 Bathroom, 1 vanity
- Pre-Fab Container :** Fully insulated & pre-painted mist white interior with all fitting accessories.
- Walls & Roof :** EPS Insulated Panels
- Floor :** Steel joist with timber floor or vinyl covering
- Doors :** 1 x Entrance door with lock
- Windows :** 4 x Aluminium powder coated windows with locks and fly screen
- Electrical :** 5 x LED Lights & 5 x Electrical Points
- Bedroom :** 3 Bedroom
- Bathroom :** 1 Bathroom

Extra: Aud: 9,000 per for Plumbing, Kitchen & Bathroom PC items

**2 KING – 4B, L, 2BT, K
LOUNGE, 4 BEDROOM
+KITCHEN+2BATHROOM, STAIRCASE
Transportable & Flat Pack**

Opt 1: Flat Pack (Silver)
Opt 2: Transportable (Gold)

- ✓ Pre-Fab insulated Container type
- ✓ Size - 3.0x 11.8 *2.7m : 35.40 SQM
- ✓ Bigger than a 40 Ft.
- ✓ Fully functional home
- ✓ Ready for Site Delivery

**Our Quality Homes Are
FULLY INSULATED,
Engineered & Built to stringent Australian
Building Codes**

Opt 1 - \$79,000

Opt 2 - \$110,500

*GST Additional
Disclaimer: Price is
subject to change
without notice*



Add-ons at addition Cost

- Double Glazed doors & windows.
- Glass walls & room partitions walls
- Washroom fittings & Plumbing works
- Flooring tiles, Carpet, Air-con
- Off grid – Solar panel, Solar water heater
- Architecturally designed External cladding
- Kitchen Cabinet, Wardrobe, Appliances
- Design by Architect
- Range of design material to select
- Customized – More than Container size
- Decking with pergola / Awing
- Range of selection options – visit our website
- Fiancé Option - Available

Standard Inclusions

Floor Plan : 4x Bedroom/, 2 Bathroom, 2 Lounge, Staircase

Pre-Fab Container : Fully insulated & pre-painted mist white interior with all fitting accessories.

Walls & Roof : EPS Insulated Panels

Floor : Steel joist with timber floor or vinyl covering

Doors : 1 x Entrance door with lock

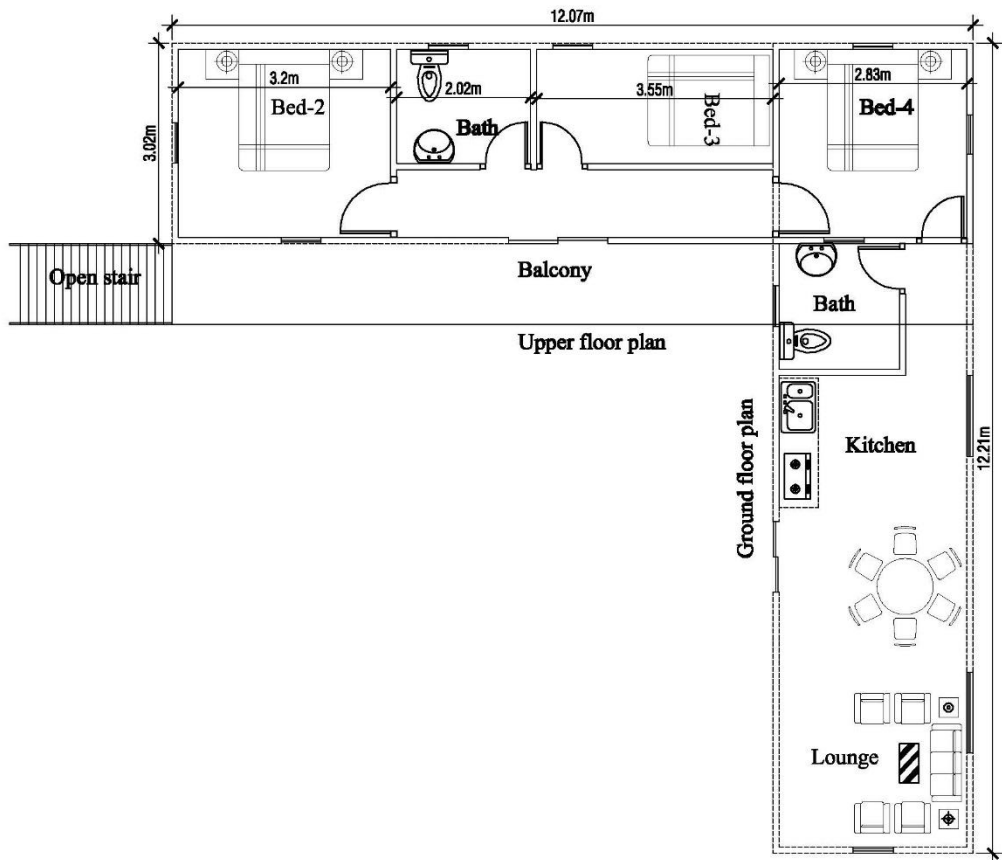
Windows : 6 x Aluminium powder coated windows with locks and fly screen

Electrical : 8 x LED Lights & 8 x Electrical Points

Extra: Aud: 9,000 per for Plumbing, Kitchen & Bathroom PC items

2 KING – 4B, L, 2BT, K
LOUNGE, 4 BEDROOM
+KITCHEN+2BATHROOM, STAIRCASE
Transportable & Flat Pack

Sample Floorplans



2G KING – 2L, 4B,2B,K **LOUNGE, 3 BEDROOM** **+KITCHEN+2BATHROOM, STAIRCASE** **Transportable & Flat Pack**

Opt 1: Flat Pack (Silver)
Opt 2: Transportable (Gold)

- ✓ **Pre-Fab insulated Container type**
- ✓ **Size - 3.0x 11.8 *2.7m : 35.40 SQM**
- ✓ **Bigger than a 40 Ft.**
- ✓ **Fully functional home**
- ✓ **Ready for Site Delivery**

Our Quality Homes Are
FULLY INSULATED,
Engineered & Built to stringent Australian
Building Codes

GST Additional
Disclaimer: Price is
subject to change
without notice

Opt 1 - \$84,000
Swimming Pool - \$20,000



Add-ons at addition Cost

- Double Glazed doors & windows.
- Glass walls & room partitions walls
- Washroom fittings & Plumbing works
- Flooring tiles, Carpet, Air-con
- Off grid – Solar panel, Solar water heater
- Architecturally designed External cladding
- Kitchen Cabinet, Wardrobe, Appliances
- Design by Architect
- Range of design material to select
- Customized – More than Container size
- Decking with pergola / Awing
- Range of selection options – visit our website
- **Fiancé Option - Available**

Standard Inclusions

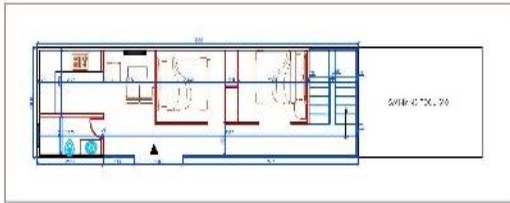
- Floor Plan :** 4/5x Bedroom/, 2 Bathroom, 2 Lounge, Staircase
- Pre-Fab Container :** Fully insulated & pre-painted mist white interior with all fitting accessories.
- Walls & Roof :** EPS Insulated Panels
- Floor :** Steel joist with timber floor or vinyl covering
- Doors :** 1 x Entrance door with lock
- Windows :** 6 x Aluminium powder coated windows with locks and fly screen
- Electrical :** 8 x LED Lights & 8 x Electrical Points

Extra: Aud: 9,000 per for Plumbing, Kitchen & Bathroom PC items

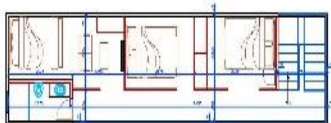
2G KING – 2L, 4B,2B,K
2 LOUNGE, 4/5 BEDROOM
+KITCHEN+2BATHROOM, STAIRCASE
Transportable & Flat Pack

Sample Floorplans

OPTION 1

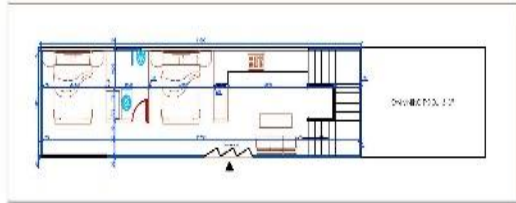


GROUND FLOOR

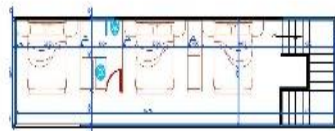


FIRST FLOOR

OPTION 3



GROUND FLOOR

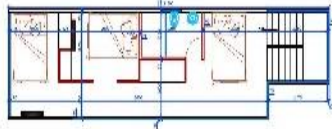


FIRST FLOOR

OPTION 2

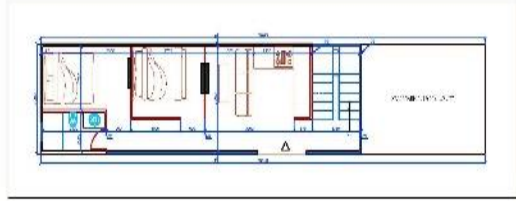


GROUND FLOOR

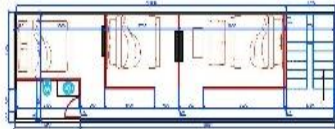


FIRST FLOOR

OPTION 4



GROUND FLOOR



FIRST FLOOR

4G KING – 2L, 4B,2B,K **2 LOUNGE, 4/5 BEDROOM** **+KITCHEN+2BATHROOM, STAIRCASE** **Transportable & Flat Pack**

Opt 1: Flat Pack (Silver)
Opt 2: Transportable (Gold)

- ✓ **Pre-Fab insulated Container type**
- ✓ **Size - 3.0x 11.8 *2.7m : 35.40 SQM**
- ✓ **Bigger than a 40 Ft.**
- ✓ **Fully functional home**
- ✓ **Ready for Site Delivery**

Our Quality Homes Are
FULLY INSULATED,
Engineered & Built to stringent Australian
Building Codes

GST Additional
Disclaimer: Price is
subject to change
without notice

Opt 1 - \$160,000
Swimming Pool - \$25,000



Add-ons at addition Cost

- Double Glazed doors & windows.
- Glass walls & room partitions walls
- Washroom fittings & Plumbing works
- Flooring tiles, Carpet, Air-con
- Off grid – Solar panel, Solar water heater
- Architecturally designed External cladding
- Kitchen Cabinet, Wardrobe, Appliances
- Design by Architect
- Range of design material to select
- Customized – More than Container size
- Decking with pergola / Awing
- Range of selection options – visit our website
- **Fiancé Option - Available**

Standard Inclusions

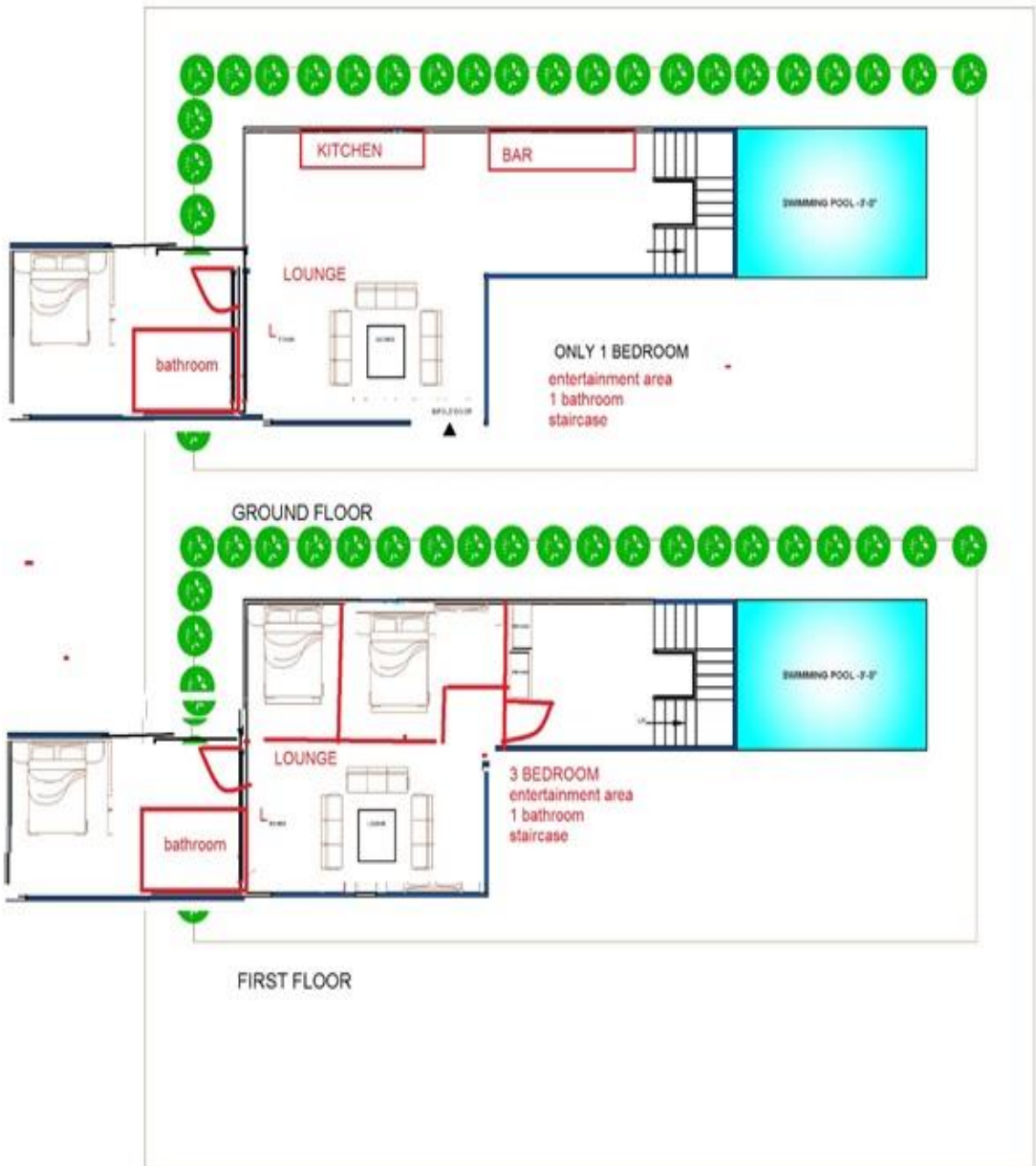
- Floor Plan :** 4/5x Bedroom/, 2 Bathroom, 2 Lounge, Staircase
- Pre-Fab Container :** Fully insulated & pre-painted mist white interior with all fitting accessories.
- Walls & Roof :** EPS Insulated Panels
- Floor :** Steel joist with timber floor or vinyl covering
- Doors :** 1 x Entrance door with lock
- Windows :** 6 x Aluminium powder coated windows with locks and fly screen
- Electrical :** 8 x LED Lights & 8 x Electrical Points

Extra: Aud: 9,000 per for Plumbing, Kitchen & Bathroom PC items

4G KING – 2L, 4B,2B,K
2 LOUNGE, 4/5 BEDROOM
+KITCHEN+2BATHROOM, STAIRCASE
Transportable & Flat Pack

Sample Floorplans

this is for 4 40 foot container





Frequently Asked Questions (FAQ's)

Q1: What is the price?

A1: We provide a base price for each standard floor plan along with an option sheet. This sheet allows you to select upgrades or remove certain items, offering a realistic estimate of your final cost.

Q2: Can we buy DIY kits?

A2: Yes, DIY kits are available for purchase.

Q3: Can we rent them?

A3: Yes, choose from our models and request a price list to rent.

Q4: Can we rent-to-own them?

A4: Absolutely! Our rent-to-own option is often more affordable than renting. Contact us for pricing details.

Q5: Are the units mobile? Can they be transported?

A5: Yes, all standard container models are transportable. For example:

17.70 sqm model: Weighs 1.8–2.5 tonnes.

37.7 sqm model: Weighs 3.5–5 tonnes.

Glass container models must be fixed on-site, with only the frames being transportable. Transportation requires professional assistance.

Q6: Can two or more containers be joined on-site?

A6: Yes, multiple containers can be combined to create larger accommodations, subject to space and local council approvals.

Q7: Can the models be customized?

A7: Yes, you can customize all models to your preferred size and materials. Architectural design and engineering certifications are charged additionally.

Q8: Do you offer financing?

A8: Yes, we can assist you with financing. Please ask us for details.



Q9: Are delivery and set-up included in the price?

A9: Delivery and set-up are not included in the base price but can be arranged at an additional cost.

Q10: What does set-up involve?

A10: Set-up includes creating footings or piers and connecting utilities. We provide guidance so you can prepare the site while your unit is being constructed.

Q11: How are the units heated and cooled?

A11: The units are energy-efficient. You can use a small heater or cooler to keep them comfortable year-round.

Q12: What about building codes and zoning?

A12: Regulations vary by location. Contact your local council to determine whether container dwellings are classified as outbuildings or homes in your area.

Q13: How long does it take to manufacture one?

A13: Manufacturing takes 2–6 weeks, depending on design and materials. Total delivery time depends on the number of units ordered.

Q14: How are utilities connected?

A14: Utilities (electricity, water, sewer/septic) are connected like traditional homes. Options for generator hookups or gas lines can also be included during the design phase.

Q15: Do you offer off-grid solar options?

A15: Yes, we offer "solar-ready" or fully off-grid solutions tailored to your needs. Ask us for a customized quote.

Q16: How thick are the containers, and how are they constructed?

A16: Containers are built with strong steel chassis frames and 50 mm insulated panels for durability and efficiency.

Q17: Are the containers weather-resistant?

A17: Yes, they are designed to withstand harsh weather conditions, including heavy rain, strong winds, and extreme temperatures.

Q18: Can the containers be used in cyclone or earthquake-prone areas?

A18: Yes, they meet structural standards for high-wind and seismic zones. Additional reinforcements can be made as needed.



Q19: Are they actually shipping containers?

A19: No, they are not repurposed shipping containers. However, they mimic the modern look and quick-build convenience of containers while offering enhanced durability.

Q20: Can they be stacked or made into multi-story structures?

A20: Yes, containers can be stacked to create multi-story designs. Let us know your requirements, and we will engineer them accordingly.

Q21: Can I add a veranda or deck to my container home?

A21: Absolutely! Verandas, decks, and outdoor spaces can be added during the design phase or later.

Q22: Are the containers eco-friendly?

A22: Yes, they are made with sustainable materials and designed to minimize waste. Options for solar power, rainwater systems, and composting toilets are also available.

Q23: Can the containers be used as temporary housing?

A23: Yes, they are ideal for temporary housing or emergency shelters due to their durability and quick deployment.

Q24: Can I expand my container home later?

A24: Yes, the modular design allows for easy expansion with additional containers.

Q25: Can we add additional cladding to the exterior?

A25: Yes, we offer various cladding options for an enhanced exterior finish at an additional cost.

Q26: How far can these units be delivered?

A26: Any parts of Australia.

Have More Questions?

Contact us today to discuss your container housing needs or request a custom quote. We're here to help make your dream space a reality!



Benefits of Container Homes

1. Strength and Durability

Container homes are built to withstand extreme weather conditions, including snow, high winds, hurricanes, tornadoes, and even earthquakes. Their solid steel construction ensures long-lasting durability.

2. Same-Day Move-In

Our containers are custom-designed to meet your specific requirements and preferences. Pre-plumbed, pre-wired, and fully assembled, they can be delivered ready to use. As long as water, electricity, and sewer/septic connections are available onsite, the container can be installed, secured, and hooked up the same day—allowing you to move in that evening.

3. Low Maintenance

For minimal upkeep, we offer metal and vinyl siding options. With a metal roof and siding, external maintenance is virtually eliminated. This is ideal for lake cabins, hunting lodges, or vacation homes, allowing you to focus on enjoying your time away without worrying about repairs. Metal options ensure durability and eliminate concerns about wood rot or replacing siding.

4. Termite and Insect Resistance

The only wood in the container is the treated, weather- and insect-resistant 18mm thick, 19-ply plywood flooring. The walls are made of solid steel, preventing termites or other pests from causing damage. Openings for doors and windows are fully insulated, caulked, and sealed to keep out insects, rodents, and weather. Even in the middle of the woods, your container cabin remains safe and secure from pests.

5. Designed for Transport

Containers are specifically engineered for transport. Whether you use your own contacts or let us assist you, we can help arrange delivery and placement on your site. If you have the necessary equipment, you can even pick up and transport the container yourself. Alternatively, placing your container in a local mobile home park is an excellent option, as utility services are already established.

6. Versatile Applications

Our containers are not just for homes—they're perfect for a range of projects, including:

Schools. Holiday homes, Restaurants, Warehouses, High-rise designer hotels, Commercial projects

Contact Us for Larger Projects, Discuss your vision for large-scale projects with us, and let's explore how container solutions can meet your needs. Whether it's a unique commercial venture or a customized community project, we're here to help.

Checkout our Youtube link on Quick build Solution on [PRE-FAB CONTAINER HOMES](#)

****Distributorship enquires are welcome**

*** Finance assistance available**

